

# HEDIS Benchmarks and Coding Guidelines for Quality Care

Electronic Clinical Data Systems (ECDS)



# Table of Contents

4	Electronic Clinical Data Systems
6	Follow-Up Care for Children Prescribed ADHD Medication (ADD-E)
8	Adult Immunization Status (AIS-E)
10	Metabolic Monitoring for Children and Adolescents on Antipsychotics (APM-E)
12	Unhealthy Alcohol Use Screening and Follow-Up (ASF-E)
14	Breast Cancer Screening
16	Cervical Cancer Screening (CCS-E)
18	Childhood Immunization Status (CIS-E)
20	Colorectal Cancer Screening (COL-E)
22	Utilization of the <i>PHQ-9</i> to Monitor Depression Symptoms for Adolescents and Adults (DMS-E)
24	Depression Remission or Response for Adolescents and Adults (DRR-E)
26	Depression Screening and Follow-Up for Adolescents and Adults (DSF-E)
30	Immunizations for Adolescents (IMA-E)
32	Postpartum Depression Screening and Follow-Up (PDS-E)
34	Prenatal Depression Screening and Follow-Up (PND-E)
36	Prenatal Immunization Status (PRS-E)
38	Social Need Screening and Intervention (SNS-E)

Appendix — Coding for ECDS Measures	42
Follow-Up Care for Children Prescribed ADHD Medication (ADD-E)	42
Adult Immunization Status (AIS-E)	42
Metabolic Monitoring for Children and Adolescents on Antipsychotics (APM-E)	44
Unhealthy Alcohol Use Screening and Follow-Up (ASF-E)	46
Breast Cancer Screening (BCS-E)	48
Cervical Cancer Screening (CCS-E)	52
Childhood Immunization Status (CIS-E)	54
Utilization of the PHQ-9 to Monitor Depression Symptoms for Adolescents and Adults (DMS-E)	58
Depression Remission or Response for Adolescents and Adults (DRR-E)	59
Depression Screening and Follow-Up for Adolescents and Adults (DSF-E)	61
Immunizations for Adolescents (IMA-E)	72
Postpartum Depression Screening and Follow-Up (PDS-E)	74
Prenatal Depression Screening and Follow-Up (PND-E)	84
Prenatal Immunization Status (PRS-E)	97
Social Need Screening and Intervention (SNS-E)	98

Note: The codes and measure tips listed are informational only, not clinical guidelines or standards of medical care, and do not guarantee reimbursement. All member care and related decisions of treatment are the sole responsibility of the provider. This information does not dictate or control your clinical decisions regarding the appropriate care of members. Your state/provider contract(s), Medicaid, member benefits and several other guidelines determine reimbursement for the applicable codes. Proper coding and providing appropriate care decrease the need for high volume of medical record review requests and provider audits. It also helps us review your performance on the quality of care that is provided to our members and meet the HEDIS measure for quality reporting based on the care you provide our members. Please note: The information provided is based on HEDIS MY 2023 technical specifications and is subject to change based on guidance given by the National Committee for Quality Assurance (NCQA), the Centers for Medicare & Medicaid Services (CMS) and state recommendations. Please refer to the appropriate agency for additional guidance.

# Electronic Clinical Data Systems

The HEDIS® quality measures reported using the Electronic Clinical Data Systems (ECDS) inspire innovative use of electronic clinical data to document high-quality patient care that demonstrates commitment to evidence-based practices. Organizations that report HEDIS using ECDS encourage the electronic exchange of the information needed to provide high-quality services, ensuring that the information reaches the right people at the right time.

- ECDS reporting is part of the National Committee for Quality Assurance's (NCQA) larger strategy to enable a digital quality system and is aligned with the industry's move to digital measures.
- The ECDS reporting standard provides a method to collect and report structured electronic clinical data for HEDIS quality measurement and improvement.
- According to NCQA, the HEDIS hybrid data collection (medical record collection) will be phased-out in the coming years.
- Health plans and healthcare providers will need to take advantage of electronic data streams to ensure accurate reporting of measures that require data not typically found in claims.
- CPT® category II codes can be used for performance measurement. The use of the CPT II decreases the need for record abstraction and chart review.
- CVX codes represent the type of product used in an immunization. Every immunization that used a given type of product will have the same CVX, regardless of who received it.
- Logical observation identifier names and codes (LOINC) and Systemized nomenclature of medicine (SNOMED) codes do not appear on claims and are quickly becoming vital to HEDIS reporting, especially for ECDS measures:
  - LOINC codes: while typically associated with lab data, there are several behavioral health (BH) screenings that can only be represented by LOINC codes for the purposes of HEDIS reporting and can be extracted from electronic medical record (EMR) systems.
  - SNOMED codes represent both diagnoses and procedures as well as clinical findings. SNOMED codes are the industry standard for classifying clinical data in EMR systems and can be extracted from EMR systems.
  - Because LOINC codes and SNOMED CT codes can only be obtained through supplemental data feeds, it is important that health plans and the provider community embrace the sharing of these EMR data to ensure the quality of care our members are receiving.

Note: HEDIS® is a registered trademark of the National Committee for Quality Assurance (NCQA).

**Helpful tips:**

- Use this booklet as a reference to understand the ECDS measures and the coding associated with electronic data transmission for Healthy Blue members.
- Contact your Healthy Blue representative to establish an electronic data transfer with the plan if your organization does not already have one.
- Make full use of CPT II codes to submit care quality findings; many HEDIS gaps could be closed via claims if CPT II codes were fully utilized.
- Ensure the EMR systems are set up to link the clinical and behavior health entries to LOINC codes and SNOMED codes:
  - Ensure that the extracts are inclusive of LOINC codes for BH screenings among other things and SNOMED codes.

**Notes:**

---

---

---

---

---

---

---

---

---

---

---

---

---

---

---

---

---

---

---

---

---

---

---

---

---

---



# Follow-Up Care for Children Prescribed ADHD Medication (ADD-E)

This measure looks at the percentage of children newly prescribed attention-deficit/hyperactivity disorder (ADHD) medication who had at least three follow-up care visits within a 10-month period, one of which was within 30 days of when the first ADHD medication was dispensed. Two rates are reported:

- **Initiation Phase:** The percentage of members 6 to 12 years of age as of the index prescription start date (IPSD) with an ambulatory prescription dispensed for ADHD medication, who had one follow-up visit with practitioner with prescribing authority during the 30-day Initiation Phase.
- **Continuation and Maintenance (C&M) Phase:** The percentage of members 6 to 12 years of age as of the IPSD with an ambulatory prescription dispensed for ADHD medication, who remained on the medication for at least 210 days and who, in addition to the visit in the Initiation Phase, had at least two follow-up visits with a practitioner within 270 days (nine months) after the Initiation Phase ended.

## Record your efforts:

When prescribing a new ADHD medication:

- Be sure to schedule a follow-up visit right away — within 30 days of ADHD medication initially prescribed or restarted after a 120-day break.
- Schedule follow-up visits while members are still in the office.
- Have your office staff call members at least three days before appointments.
- After the initial follow-up visits, schedule at least two more office visits in the next nine months to monitor patient's progress.
- Be sure that follow-up visits include the diagnosis of ADHD.

## Exclusions:

- Exclude members who had an acute inpatient encounter for a mental, behavioral, or neurodevelopmental disorder during the 300 days (10 months) after the IPSD.
- Members with a diagnosis of narcolepsy.
- Members in hospice or using hospice services anytime during the measurement year.

Notes:

---

---

---

---

---

---

---

---

---

---

---

---

---

---

---

---

---

---

---

---

---

---

---



# Adult Immunization Status (AIS-E)

This measure looks at the percentage of members 19 years of age and older who are up to date on recommended routine vaccines for influenza; tetanus and diphtheria (Td); tetanus, diphtheria, and acellular pertussis (Tdap); zoster; and pneumococcal.

## Record your efforts

Document the required age vaccines were received according to the time interval specified in the measure:

- Members who received an influenza vaccine on or between July 1 of the year prior to the measurement period and June 30 of the measurement period
- Members who received at least one Td vaccine or one Tdap vaccine between nine years prior to the start of the measurement period and the end of the measurement period, or
- Members with a history of at least one of the following contraindications any time before or during the measurement period:
  - Anaphylaxis due to the diphtheria, tetanus, or pertussis vaccine.
  - Encephalitis due to the diphtheria, tetanus, or pertussis vaccine.
- Members who received at least one dose of the herpes zoster live vaccine or two doses of the herpes zoster recombinant vaccine at least 28 days apart, any time on or after the member's 50th birthday and before or during the measurement period
- Members who were administered the 23-valent pneumococcal polysaccharide vaccine on or after the member's 60th birthday and before or during the measurement period



## Exclusion:

- Members in hospice or using hospice services any time during the measurement period





## Metabolic Monitoring for Children and Adolescents on Antipsychotics (APM-E)

This HEDIS measure looks at the percentage of children and adolescents 1 to 17 years of age who had two or more antipsychotic prescriptions and had metabolic testing. Three rates are reported:

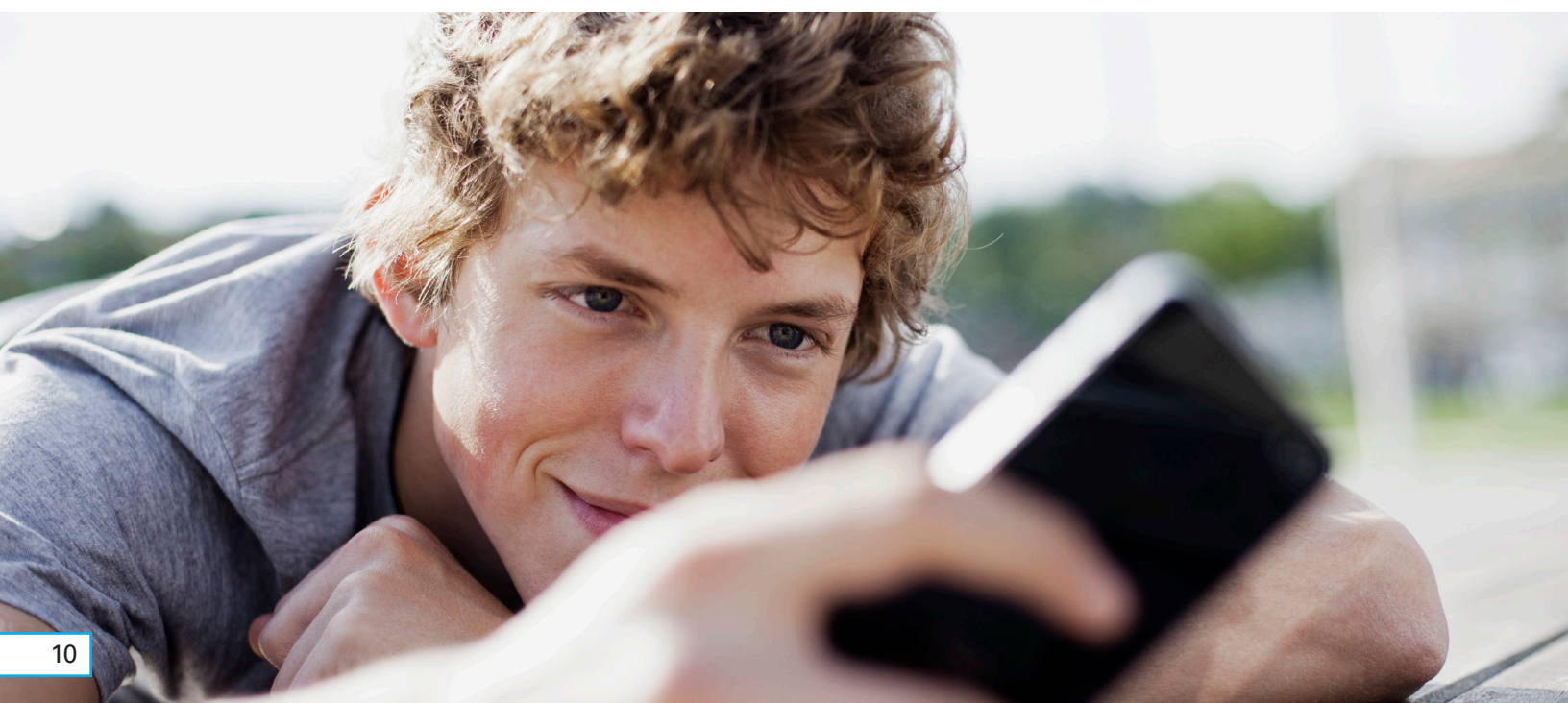
- The percentage of children and adolescents on antipsychotics who received blood glucose testing.
- The percentage of children and adolescents on antipsychotics who received cholesterol testing.
- The percentage of children and adolescents on antipsychotics who received blood glucose and cholesterol testing.

### Record your efforts:

- Members who received at least one test for blood glucose or HbA1c
- Members who received at least one test for LDL-C or cholesterol
- Members who received both of the following on the same or different dates:
  - At least one test for blood glucose or HbA1c:
  - At least one test for LDL-C or cholesterol.

### Exclusions:

- Members in hospice or using hospice services anytime during the measurement year





# Unhealthy Alcohol Use Screening and Follow-Up (ASF-E)

This measure looks at the percentage of members 18 years of age and older who were screened for unhealthy alcohol use using a standardized instrument and, if screened positive, appropriate follow-up care:

- **Unhealthy Alcohol Use Screening:** The percentage of members who had a systematic screening for unhealthy alcohol use.
- **Alcohol Counseling or Other Follow-up Care:** The percentage of members receiving brief counseling or other follow-up care within two months of screening positive for unhealthy alcohol use.

## Record your efforts:

A standard assessment instrument that has been normalized and validated for the adult patient population to include *AUDIT*, *AUDIT-C*, and a *Single-Question Screen*. Screening requires completion of one or more instruments. The threshold for a positive finding is indicated below for each instrument:

Screening Instrument	Positive Finding
<b>Alcohol Use Disorders Identification Test (AUDIT) Screening Instrument</b>	Total Score $\geq$ 8
<b>Alcohol Use Disorders Identification Test Consumption (AUDIT-C) Screening Instrument</b>	Total Score $\geq$ 4 for men Total Score $\geq$ 3 for women
<b>Single-Question Screen: How many times in the past year have you had five (for men) or four (for women and all adults older than 65 years) or more drinks in a day?</b>	Total Score $\geq$ 1

**Any of the following on or up to 60 days after the first positive screen:**

- Feedback on alcohol use and harms
- Identification of high-risk situations for drinking and coping strategies
- Increase the motivation to reduce drinking
- Development of a personal plan to reduce drinking
- Documentation of receiving alcohol misuse treatment

**Exclusions:**

- Members with alcohol use disorder that starts during the year prior to the measurement period
- Members with history of dementia any time during the member’s history through the end of the measurement period
- Members in hospice or using hospice services any time during the measurement period

**Notes:**

---

---

---

---

---

---

---

---

---

---

---

---

---

---

---

---

---

---

---

---

---



# Breast Cancer Screening (BCS-E)

This HEDIS measure looks at women 50 to 74 years of age who had a mammogram to screen for breast cancer within the past two years.

## Record your efforts:

Include documentation of all types and methods of mammograms including:

- Screening.
- Diagnostic.
- Film.
- Digital.
- Digital breast tomosynthesis.

In establishing health history with new members, please make sure you ask about when members last mammogram was performed, document at a minimum, year performed in your health history.

Gaps in care are not closed by the following, as they are performed as an adjunct to mammography:

- Breast ultrasounds.
- MRIs.
- Biopsies.

## Exclusions:

- Members who had a bilateral mastectomy or both right and left unilateral mastectomies any time during the member's history through the end of the measurement period
- Members receiving palliative care
- Members in hospice or using hospice services anytime during the measurement year
- Members 66 years of age and with frailty and advanced illness. Members must meet both of the following frailty and advanced illness criteria to be excluded:
  - At least two indications of frailty
  - At least two outpatient visits with an advanced illness diagnosis





## Cervical Cancer Screening (CCS-E)

The percentage of women 21 to 64 years of age who screened for cervical cancer using any of the following criteria:

- Women 21 to 64 years of age who had cervical cytology performed within the last three years.
- Women 30 to 64 years of age who had cervical high-risk papillomavirus (hrHPV) testing performed within five years.
- Women 30 to 64 years of age who had cervical cytology /high risk human papillomavirus (hrHPV) testing within the last five years.

### Record your efforts:

Make sure your medical records reflect:

- The date when the cervical cytology was performed.
- The results or findings
- Notes in patient's chart if patient has a history of hysterectomy:
  - Complete details if it was a complete, total, or radical abdominal, vaginal, or unspecified hysterectomy with no residual cervix; also, document history of cervical agenesis or acquired absence of cervix. Include, at a minimum, the year the surgical procedure was performed.

### Exclusions:

- Members who have one of the following in their history can be excluded:
  - Absence of cervix
  - Hysterectomy with no residual cervix, cervical agenesis or acquired absence of a cervix
  - Members receiving palliative care
  - Members in hospice or using hospice services anytime during the measurement year

**Notes:**

---

---

---

---

---

---

---

---

---

---

---

---

---

---

---

---

---

---

---

---

---

---

---

---

---

---

---

---

---

## Childhood Immunization Status (CIS-E)

The percentage of children turning 2 years of age who had four diphtheria, tetanus, and acellular pertussis (DTaP); three polio (IPV); one measles, mumps, and rubella (MMR); three haemophiles influenza type B (HiB); three hepatitis B (Hep B), one chicken pox (VZV); four pneumococcal conjugate (PCV); one hepatitis A (Hep A); two or three rotavirus (RV); and two influenza (flu) vaccines by their second birthday:

- Hep B *initial dose* is the only vaccine that can be given before 42 days after birth.
- Influenza cannot be given until infant is 6 months of age.
- MMR, VZV and Hep A can only be given between first and second birthday to close the gap.
- Second Influenza vaccination may be the LAIV given on members 2nd birthday.



	Doses:
<b>DTaP</b>	4
<b>IVR</b>	3
<b>MMR</b>	1
<b>Hib</b>	3
<b>Hep B</b>	3
<b>VZV</b>	1
<b>PCV</b>	4
<b>Hep A</b>	1

	Doses:
<b>Rotavirus</b>	2 or 3: <ul style="list-style-type: none"> <li>• Two-dose (Rotarix)</li> <li>• Three-dose (Rotateq) vaccine</li> </ul>
<b>Influenza</b>	Second dose may be LAIV given on 2nd birthday



## Record your efforts:

Once you give our members their needed immunizations, let us and the state know by:

- Recording the immunizations in your state registry.
- Documenting the immunizations (historic and current) within medical records to include:
  - A note indicating the name of the specific antigen and the date of the immunization.
  - The certificate of immunization prepared by an authorized healthcare provider or agency.
  - Parent refusal, documented history of anaphylactic reaction to serum/vaccinations, illnesses, or seropositive test result.
  - The date of the first hepatitis B vaccine given at the hospital and name of the hospital if available.
  - A note that the *member is up to date* with all immunizations but does not list the dates of all immunizations and the names of the immunization agents does not constitute sufficient evidence of immunization for HEDIS reporting.

## Exclusions:

- Any of the following on or before the child's second birthday:
  - Severe combined immunodeficiency
  - Immunodeficiency
  - HIV
  - Lymphoreticular cancer, multiple myeloma, or leukemia.
  - Intussusception.
- Members in hospice or using hospice services anytime during the measurement year

## Notes:

---



---



---



---



---



---



---



---



---



---

# Colorectal Cancer Screening (COL-E)

This measure looks at the percentage of members 45 to 75 years of age who had appropriate screening for colorectal cancer.

## Record your efforts:

- Members with one or more screenings for colorectal cancer. Any of the following meet criteria:
  - Fecal occult blood test during the measurement period
  - Flexible sigmoidoscopy during the measurement period or the four years prior to the measurement period
  - Colonoscopy during the measurement period or the nine (9) years prior to the measurement period
  - CT colonography during the measurement period or the four (4) years prior to the measurement period
  - Stool DNA (sDNA) with FIT test during the measurement period or the two years prior to the measurement period

## Exclusions:

- Members in hospice or using hospice services any time during the measurement period.
- Members with colorectal cancer or a total colectomy any time during the member's history through the end of the measurement period.
- Members receiving palliative care during the measurement period.
- Members 66 years of age and with frailty and advanced illness. Members must meet BOTH of the following frailty and advanced illness criteria to be excluded:
  - At least two indications of frailty
  - At least two outpatient visits with an advanced illness diagnosis



## Utilization of the *PHQ-9* to Monitor Depression Symptoms for Adolescents and Adults (DMS-E)

This measure looks at the percentage of members 12 years of age and older with a diagnosis of major depression or dysthymia who had an outpatient encounter with a *Patient Health Questionnaire-9 (PHQ-9)* score present in their record in the same assessment period as the encounter.

### Record your efforts:

The identifiers and descriptors for each organization's coverage used to define members' eligibility for measure reporting. Allocation for reporting is based on eligibility during the participation period.

- **Assessment Period 1:**  
January 1 to April 30.
- **Assessment Period 2:**  
May 1 to August 31.
- **Assessment Period 3:**  
September 1 to December 31.



The measure allows the use of two *PHQ-9* assessments. Selection of the appropriate assessment should be based on the member's age:

- *PHQ-9*: 12 years of age and older
- *PHQ-9 Modified for Teens*: 12 to 17 years of age

The *PHQ-9* assessment does not need to occur during a face-to-face encounter; it may be completed over the telephone or through a web-based portal.

### Exclusions:

- Members with any of the following at any time during member's history through the end measurement period:
  - Bipolar disorder
  - Personality disorder
  - Psychotic disorder
  - Pervasive developmental disorder
- Members in hospice or using hospice services any time during the measurement period





# Depression Remission or Response for Adolescents and Adults (DRR-E)

This measure looks at the percentage of members 12 years of age and older with a diagnosis of depression and an elevated *PHQ-9* score, who had evidence of response or remission within four to eight months of the elevated score:

- **Follow-Up *PHQ-9*:** The percentage of members who have a follow-up *PHQ-9* score documented within four to eight months after the initial elevated *PHQ-9* score.
- **Depression Remission:** The percentage of members who achieved remission within four to eight months after the initial elevated *PHQ-9* score.
- **Depression Response:** The percentage of members who showed response within four to eight months after the initial elevated *PHQ-9* score.

## Record your efforts

The identifiers and descriptors for each organization's coverage used to define members' eligibility for measure reporting. Allocation for reporting is based on eligibility during the participation period:

- May 1 of the year prior to the measurement period through December 31 of the measurement period
- May 1 of the year prior to the measurement period through April 30 of the measurement period
- The 120- to 240-day period after the index episode start date.
- Index episode start date: The earliest date during the intake period where a member has a diagnosis of major depression or dysthymia **and** a *PHQ-9* total score > 9 documented.

## The measure allows the use of two *PHQ-9* assessments. Selection of the appropriate assessment should be based on the member's age:

- *PHQ-9*: 12 years of age and older
- *PHQ-9 Modified for Teens*: 12 to 17 years of age

The *PHQ-9* assessment does not need to occur during a face-to-face encounter; it may be completed over the telephone or through a web-based portal.

**Exclusions:**

Members with any of the following at any time during the intake period or during the measurement period:

- Bipolar disorder
- Personality disorder
- Psychotic disorder
- Pervasive developmental disorder, or
- Members in hospice or using hospice services any time during the measurement period

**Notes:**

---

---

---

---

---

---

---

---

---

---

---

---

---

---

---

---

---

---

---

---

---

---

---

---

---

# Depression Screening and Follow-Up for Adolescents and Adults (DSF-E)

The percentage of members 12 years of age and older who were screened for clinical depression using a standardized instrument and, if screened positive, received follow-up care:

- **Depression Screening:** The percentage of members who were screened for clinical depression using a standardized instrument.
- **Follow-Up on Positive Screen:** The percentage of members who received follow-up care within 30 days of a positive depression screen finding.



## Record your efforts

The identifiers and descriptors for each organization's coverage used to define members' eligibility for measure reporting. Allocation for HEDIS reporting is based on eligibility during the participation period.

This measure requires the use of an age-appropriate screening instrument. The member's age is used to select the appropriate depression screening instrument.

## Exclusions:

- Members with bipolar disorder in the year prior to the measurement period
- Members with depression that starts during the year prior to the measurement period
- Members in hospice or using hospice services any time during the measurement period

### Depression screening instrument:

A standard assessment instrument that has been normalized and validated for the appropriate patient population. Eligible screening instruments with thresholds for positive findings include:

Instruments for Adolescents ( $\leq 17$ years)	Positive Finding
<i>Patient Health Questionnaire (PHQ-9)</i> <sup>®</sup>	Total Score $\geq 10$
<i>Patient Health Questionnaire Modified for Teens (PHQ- 9M)</i> <sup>®</sup>	Total Score $\geq 10$
<i>Patient Health Questionnaire-2 (PHQ-2)</i> <sup>®1</sup>	Total score $\geq 3$
<i>Beck Depression Inventory-Fast Screen (BDI-FS)</i> <sup>®1,2</sup>	Total score $\geq 8$
<i>Center for Epidemiologic Studies Depression Scale – Revised (CESD-R)</i>	Total score $\geq 17$
<i>Edinburgh Postnatal Depression Scale (EPDS)</i>	Total score $\geq 10$
<i>PROMIS Depression</i>	Total Score (T score) $\geq 60$

Footnotes:

1 Brief screening instrument. All other instruments are full-length.

2 Proprietary; may be cost or licensing requirement associated with use.



Instruments for Adults (18+ years)	Positive Finding
<i>PHQ-9</i>	Total score $\geq$ 10
<i>PHQ-2</i> <sup>1</sup>	Total score $\geq$ 3
<i>BDI-FS</i> <sup>1,2</sup>	Total score $\geq$ 8
<i>Beck Depression Inventory (BDI-II)</i>	Total score $\geq$ 20
<i>CESD-R</i>	Total score $\geq$ 17
<i>Duke Anxiety-Depression Scale (DUKE-AD)</i> <sup>®2</sup>	Total score $\geq$ 30
<i>Geriatric Depression Scale Short Form (GDS)</i> <sup>1</sup>	Total score $\geq$ 5
<i>Geriatric Depression Scale Long Form (GDS)</i>	Total score $\geq$ 10
<i>EPDS</i>	Total score $\geq$ 10
<i>My Mood Monitor (M-3)</i> <sup>®</sup>	Total score $\geq$ 5
<i>PROMIS Depression</i>	Total score (T score) $\geq$ 60
<i>Clinically Useful Depression Outcome Scale (CUDOS)</i>	Total score $\geq$ 31

Footnotes:

1 Brief screening instrument. All other instruments are full-length.

2 Proprietary; may be cost or licensing requirement associated with use.





## Immunizations for Adolescents (IMA-E)

This measure reviews members 13 years of age who had one dose of meningococcal vaccine, one tetanus, diphtheria toxoids and acellular pertussis (Tdap) vaccine, and have completed the human papillomavirus (HPV) vaccine series by their 13th birthday. The measure calculates a rate for each vaccine and two combination rates.

### Vaccines administered on or before their 13th birthday:

- One MCV/meningococcal vaccine on or between 11th and 13th birthdays, and one Tdap or one Td vaccine on or between their 10th and 13th birthdays
- At least two doses of HPV vaccine with DOS at 146 days apart on or between the 9th and 13th birthdays:
  - Or at least three HPV vaccines with different dates of service on or between the 9th and 13th birthdays

### Record your efforts:

Immunization information obtained from the medical record:

- A note indicating the name of the specific antigen and the date of the immunization
- A certificate of immunization prepared by an authorized healthcare provider or agency, including the specific dates and types of immunizations administered
- Document in the medical record parent or guardian refusal

### Two-dose HPV vaccination series:

- There must be at least 146 days between the first and second dose of the HPV vaccine.

### Meningococcal:

- *Do not count* meningococcal recombinant (serogroup B) (MenB) vaccines.

### Exclusions:

- Members in hospice or using hospice services anytime during the measurement year

Notes:

---

---

---

---

---

---

---

---

---

---

---

---

---

---

---

---

---

---

---

---

---

---

---

---

---

---

---

---

---

# Postpartum Depression Screening and Follow-Up (PDS-E)

This measure assesses the percentage of deliveries in which members were screened for clinical depression during the postpartum period, and if screened positive, received follow-up care:

- **Depression Screening:** The percentage of deliveries in which members were screened for clinical depression using a standardized instrument during the postpartum period.
- **Follow-Up on Positive Screen:** The percentage of deliveries in which members received follow-up care within 30 days of a positive depression screen finding.

## Record your efforts

The identifiers and descriptors for each organization's coverage used to define members' eligibility for measure reporting. Allocation for reporting is based on eligibility during the participation period:

- The delivery date through 60 days following the date of delivery

A standard assessment instrument that has been normalized and validated for the appropriate patient population. Eligible screening instruments with thresholds for positive findings include:

Instruments for Adolescents ( $\leq 17$ years)	Positive Finding
<i>Patient Health Questionnaire (PHQ-9)</i> <sup>®</sup>	Total Score $\geq 10$
<i>Patient Health Questionnaire Modified for Teens (PHQ- 9M)</i> <sup>®</sup>	Total Score $\geq 10$
<i>Patient Health Questionnaire-2 (PHQ-2)</i> <sup>®1</sup>	Total score $\geq 3$
<i>Beck Depression Inventory-Fast Screen (BDI-FS)</i> <sup>®1,2</sup>	Total score $\geq 8$
<i>Center for Epidemiologic Studies Depression Scale – Revised (CESD-R)</i>	Total score $\geq 17$
<i>Edinburgh Postnatal Depression Scale (EPDS)</i>	Total score $\geq 10$
<b>PROMIS Depression</b>	Total Score (T score) $\geq 60$

Footnotes:

1 Brief screening instrument. All other instruments are full-length.

2 Proprietary; may be cost or licensing requirement associated with use.

Instruments for Adults (18+ years)	Positive Finding
<i>PHQ-9</i>	Total score $\geq$ 10
<i>PHQ-2</i> <sup>1</sup>	Total score $\geq$ 3
<i>BDI-FS</i> <sup>1,2</sup>	Total score $\geq$ 8
<i>Beck Depression Inventory (BDI-II)</i>	Total score $\geq$ 20
<i>CESD-R</i>	Total score $\geq$ 17
<i>Duke Anxiety-Depression Scale (DUKE-AD)</i> <sup>®2</sup>	Total score $\geq$ 30
<i>EPDS</i>	Total score $\geq$ 10
<i>My Mood Monitor (M-3)</i> <sup>®</sup>	Total score $\geq$ 5
<i>PROMIS Depression</i>	Total score (T score) $\geq$ 60
<i>Clinically Useful Depression Outcome Scale (CUDOS)</i>	Total score $\geq$ 31

Footnotes:

- 1 Brief screening instrument. All other instruments are full-length.
- 2 Proprietary; may be cost or licensing requirement associated with use.

**Exclusions:**

- Deliveries in which members were in hospice or using hospice services any time during the measurement period



# Prenatal Depression Screening and Follow-up (PND-E)

This measure assesses the percentage of deliveries in which members were screened for clinical depression while pregnant and, if screened positive, received follow-up care:

- **Depression Screening:** The percentage of deliveries in which members were screened for clinical depression during pregnancy using a standardized instrument.
- **Follow-Up on Positive Screen:** The percentage of deliveries in which members received follow-up care within 30 days of a positive depression screen finding.

## Record your efforts:

The identifiers and descriptors for each organization’s coverage used to define members’ eligibility for measure reporting. Allocation for reporting is based on eligibility during the participation period:

- 28 days prior to the delivery date through the delivery date.
- A pregnancy episode in which the delivery date occurs during the measurement period.

A standard assessment instrument that has been normalized and validated for the appropriate patient population. Eligible screening instruments with thresholds for positive findings include:

Instruments for Adolescents (≤ 17 years)	Positive Finding
<i>Patient Health Questionnaire (PHQ-9)</i> <sup>®</sup>	Total Score ≥ 10
<i>Patient Health Questionnaire Modified for Teens (PHQ- 9M)</i> <sup>®</sup>	Total Score ≥ 10
<i>Patient Health Questionnaire-2 (PHQ-2)</i> <sup>®1</sup>	Total score ≥ 3
<i>Beck Depression Inventory-Fast Screen (BDI-FS)</i> <sup>®1,2</sup>	Total score ≥ 8
<i>Center for Epidemiologic Studies Depression Scale – Revised (CESD-R)</i>	Total score ≥ 17
<i>Edinburgh Postnatal Depression Scale (EPDS)</i>	Total score ≥ 10
<b>PROMIS Depression</b>	Total Score (T score) ≥ 60

Footnotes:

1 Brief screening instrument. All other instruments are full-length.

2 Proprietary; may be cost or licensing requirement associated with use.

Instruments for Adults (18+ years)	Positive Finding
<i>PHQ-9</i>	Total score $\geq$ 10
<i>PHQ-2</i> <sup>1</sup>	Total score $\geq$ 3
<i>BDI-FS</i> <sup>1,2</sup>	Total score $\geq$ 8
<i>Beck Depression Inventory (BDI-II)</i>	Total score $\geq$ 20
<i>CESD-R</i>	Total score $\geq$ 17
<i>Duke Anxiety-Depression Scale (DUKE-AD)</i> <sup>®2</sup>	Total score $\geq$ 30
<i>EPDS</i>	Total score $\geq$ 10
<i>My Mood Monitor (M-3)</i> <sup>®</sup>	Total score $\geq$ 5
<i>PROMIS Depression</i>	Total score (T score) $\geq$ 60
<i>Clinically Useful Depression Outcome Scale (CUDOS)</i>	Total score $\geq$ 31

Footnotes:

- 1 Brief screening instrument. All other instruments are full-length.
- 2 Proprietary; may be cost or licensing requirement associated with use.

**Exclusions:**

- Deliveries that occurred at less than 37 weeks gestation.
- Deliveries in which members were in hospice or using hospice services any time during the measurement period



## Prenatal Immunization Status (PRS-E)

This measure assesses the percentage of deliveries in the measurement period (January 1 to December 31) in which women had received influenza and tetanus, diphtheria toxoids, and acellular pertussis (Tdap) vaccinations.

### Record your efforts:

The identifiers and descriptors for each organization's coverage used to define members' eligibility for measure reporting. Allocation for reporting is based on eligibility during the participation period.

- 28 days prior to the delivery date through the delivery date.
- A pregnancy episode in which the delivery date occurs during the measurement period.

### Exclusions:

- Deliveries that occurred at less than 37 weeks gestation.
- Deliveries in which members were in hospice or using hospice services any time during the measurement period.





# Social Need Screening and Intervention (SNS-E)

The percentage of members who were screened, using prespecified instruments, at least once during the measurement period for unmet food, housing and transportation needs, and received a corresponding intervention if they screened positive:

- **Food Screening:** The percentage of members who were screened for food insecurity.
- **Food Intervention:** The percentage of members who received a corresponding intervention within 1 month of screening positive for food insecurity.
- **Housing Screening:** The percentage of members who were screened for housing instability, homelessness or housing inadequacy.
- **Housing Intervention:** The percentage of members who received a corresponding intervention within 1 month of screening positive for housing instability, homelessness or housing inadequacy.
- **Transportation Screening:** The percentage of members who were screened for transportation insecurity.
- **Transportation Intervention:** The percentage of members who received a corresponding intervention within 1 month of screening positive for transportation insecurity.

## Record your efforts:

- **Food insecurity:** Uncertain, limited, or unstable access to food that is: adequate in quantity and in nutritional quality; culturally acceptable; safe and acquired in socially acceptable ways.
- **Housing instability:** Currently consistently housed but experiencing any of the following circumstances in the past 12 months: being behind on rent or mortgage, multiple moves, cost burden or risk of eviction.
- **Homelessness:** Currently living in an environment that is not meant for permanent human habitation (for example, cars, parks, sidewalks, abandoned buildings, on the street), not having a consistent place to sleep at night, or because of economic difficulties, currently living in a shelter, motel, temporary or transitional living situation.
- **Housing inadequacy:** Housing does not meet habitability standards.
- **Transportation insecurity:** Uncertain, limited or no access to safe, reliable, accessible, affordable, and socially acceptable transportation infrastructure and modalities necessary for maintaining one's health, well-being, or livelihood.

Eligible screening instruments with thresholds for positive findings include:

<b>Food Insecurity Instruments</b>	<b>Screening Item LOINC Codes</b>	<b>Positive Finding LOINC Codes</b>
<b><i>Accountable Health Communities (AHC) Health-Related Social Needs (HRSN) Screening Tool</i></b>	88122-7	LA28397-0, LA6729-3
	88123-5	LA28397-0, LA6729-3
<b><i>American Academy of Family Physicians (AAFP) Social Needs Screening Tool</i></b>	88122-7	LA28397-0, LA6729-3
	88123-5	LA28397-0, LA6729-3
<b><i>Health Leads Screening Panel<sup>1</sup></i></b>	95251-5	LA33-6
<b><i>Hunger Vital Sign™<sup>1</sup> (HVS)</i></b>	88124-3	LA19952-3
<b><i>Protocol for Responding to and Assessing Patients' Assets, Risks and Experiences (PRAPARE)<sup>®1</sup></i></b>	93031-3	LA30125-1
<b><i>Safe Environment for Every Kid (SEEK)<sup>®1</sup></i></b>	95400-8	LA33-6
	95399-2	LA33-6
<b><i>U.S. Household Food Security Survey (U.S. FSS)</i></b>	95264-8	LA30985-8, LA30986-6
<b><i>U.S. Adult Food Security Survey (U.S. FSS)</i></b>	95264-8	LA30985-8, LA30986-6
<b><i>U.S. Child Food Security Survey (U.S. FSS)</i></b>	95264-8	LA30985-8, LA30986-6
<b><i>U.S. Household Food Security Survey – Six-Item Short Form (U.S. FSS)</i></b>	95264-8	LA30985-8, LA30986-6
<b><i>We Care Survey</i></b>	96434-6	LA32-8
<b><i>WellRx Questionnaire</i></b>	93668-2	LA33-6

Footnote:

1 Proprietary; may be cost or licensing requirement associated with use



Housing Instability and Homelessness Instruments	Screening Item LOINC Codes	Positive Finding LOINC Codes
<i>AHC HRSN Screening Tool</i>	71802-3	LA31994-9, LA31995-6
<i>AAFP Social Needs Screening Tool</i>	99550-6	LA33-6
<i>Children's Health Watch Housing Stability Vital Signs™<sup>1</sup></i>	98976-4	LA33-6
	98977-2	≥ 3
	98978-0	LA33-6
<i>Health Leads Screening Panel<sup>1</sup></i>	99550-6	LA33-6
<i>Protocol for Responding to and Assessing Patients' Assets, Risks and Experiences (PRAPARE)<sup>®1</sup></i>	93033-9	LA33-6
	71802-3	LA30190-5
<i>We Care Survey</i>	96441-1	LA33-6
<i>WellRx Questionnaire</i>	93669-0	LA33-6

Footnote:

1 Proprietary; may be cost or licensing requirement associated with use



Transportation Insecurity Instruments	Screening Item LOINC Codes	Positive Finding LOINC Codes
<i>AHC HRSN Screening Tool</i>	93030-5	LA33-6
<i>AAFP Social Needs Screening Tool</i>	99594-4	LA33-6
<i>Comprehensive Universal Behavior Screen (CUBS)</i>	89569-8	LA29232-8, LA29233-6, LA29234-4
<i>Health Leads Screening Panel<sup>1</sup></i>	99550-6	LA33-6
<i>PRAPARE<sup>1</sup></i>	93030-5	LA30133-5, LA30134-3
<i>PROMIS<sup>®1</sup></i>	92358-1	LA30024-6, LA30026-1, LA30027-9
<i>WellRx Questionnaire</i>	93671-6	LA33-6

Footnote:

1 Proprietary; may be cost or licensing requirement associated with use

**Exclusions:**

- Members in hospice or using hospice services any time during the measurement period

**Notes:**

---



---



---



---



---



---



---



---



---



---

# Appendix – Coding for ECDS Measures

There are many approved NCQA codes used to identify the services included in the measures listed below. The following are just a few of the approved codes. Please see the NCQA website for a complete list <https://www.ncqa.org/>.

Note: The codes listed are informational only; this information does not guarantee reimbursement.

## Follow-Up Care for Children Prescribed ADHD Medication (ADD-E):

	Codes:	
<b>Outpatient POS</b>	<b>POS:</b>	03, 05, 07, 09, 11, 12, 13, 14, 15, 16, 17, 18, 19, 20, 22, 33, 49, 50, 71, 72
<b>Health and Behavioral Assessment or Intervention</b>	<b>CPT:</b>	96156, 96158, 96159, 96164, 96165, 96167, 96168, 96170, 96171
<b>Online Assessments</b>	<b>CPT:</b>	98966, 98967, 98968, 99441, 99442, 99443
	<b>HCPCS:</b>	G0071, G2010, G2012
<b>Telephone Visits</b>	<b>CPT:</b>	98966, 98967, 98968, 99441, 99442, 99443
	<b>SNOMED CT:</b>	185317003, 314849005, 386472008, 386473003, 401267002
<b>Telehealth POS</b>	<b>POS:</b>	02, 10

## Adult Immunization Status (AIS-E):

	Codes:	
<b>Adult Influenza Vaccine Procedure</b>	<b>CPT:</b>	90630, 90653, 90654, 90656, 90658, 90661, 90673, 90674, 90862, 90686, 90688, 90689, 90756
	<b>SNOMED CT:</b>	46233009, 346524008, 346525009, 348046004, 348047008, 400564003, 400788004, 408752008, 418707004, 419562000, 430410002
<b>Adult Influenza Immunization</b>	<b>CVX:</b>	88, 135, 140, 141, 144, 150, 153, 155, 158, 166, 168, 171, 185, 186, 197, 205



Adult Immunization Status (AIS-E) (cont.):

		Codes:
Influenza Virus LAIV Vaccine Procedure	CPT:	90660, 90672
Influenza Virus LAIV Immunization	CVX:	111, 149
Td Vaccine Procedure	CPT:	90714
Td Immunization	CVX:	09, 113, 115, 138, 139
Tdap Vaccine Procedure	CPT:	90715
	SNOWMED CT:	428251000124104
Tdap Immunization	CVX:	115
Herpes Zoster Live Vaccine Procedure	CPT:	90736
	SNOWMED CT:	377008002, 407746005, 407933006, 412530002, 424778000
Herpes Zoster Live Immunization	CVX:	121
Herpes Zoster Recombinant Vaccine Procedure	CPT:	90750
Herpes Zoster Recombinant Immunization	CVX:	187
CDC Race and Ethnicity	CPT/HCPCS/ ICD-10/CVX	1002-5: American Indian or Alaska Native 2028-9: Asian 2054-5: Black or African American 2076-8: Native Hawaiian or Other Pacific Islander 2106-3: White 2135-2: Hispanic or Latino 2186-5: Not Hispanic or Latino

## Metabolic Monitoring for Children and Adolescents on Antipsychotics (APM-E):

Codes:	
<b>CPT:</b>	82465, 83718, 83722, 84478
<b>LOINC:</b>	2085-9, 2093-3, 2571-8, 3043-7, 9830-1
<b>Cholesterol Lab Test</b>	<b>SNOWMED CT:</b> 14740000, 28036006, 77068002, 104583003, 104584009, 104586006, 104784006, 104990004, 104991000, 121868005, 166832000, 166838001, 166839009, 166849007, 166850007, 167072001, 167073006, 167082000, 167083005, 167084004, 271245006, 275972003, 314035000, 315017003, 390956002, 412808005, 412827004, 443915001
<b>Cholesterol Test Result or Finding</b>	<b>SNOWMED CT:</b> 166830008, 166831007, 166848004, 259557002, 365793008, 365794002, 365795001, 365796000, 439953004, 442193004, 442234001, 442350007, 442480001, 707122004, 707123009, 67991000119104



**Metabolic Monitoring for Children and Adolescents on Antipsychotics (APM-E)  
(cont.):**

Codes:	
<b>Glucose Lab Test</b>	<b>CPT:</b> 80047, 80048, 80050, 80053, 80069, 82947, 82950, 82951
	<b>LOINC:</b> 10450-5, 1492-8, 1494-4, 1496-9, 1499-3, 1501-6, 1504-0, 1507-3, 1514-9, 1518-0, 1530-5, 1533-9, 1554-5, 1557-8, 1558-6, 17865-7, 20436-2, 20437-0, 20438-8, 20440-4, 26554-6, 41024-1, 49134-0, 6749-6, 9375-7
	<b>SNOWMED CT:</b> 22569008, 33747003, 52302001, 72191006, 73128004, 88856000, 104686004, 167086002, 167087006, 167088001, 167095005, 167096006, 167097002, 250417005, 271061004, 271062006, 271063001, 271064007, 271065008, 275810004, 302788006, 302789003, 308113006, 313474007, 313545000, 313546004, 313624000, 313626003, 313627007, 313628002, 313630000, 313631001, 313697000, 313698005, 313810002, 412928005, 440576000, 443780009, 444008003, 444127006
<b>Glucose Test Result or Finding</b>	<b>SNOWMED CT:</b> 166890005, 166891009, 166892002, 166914001, 166915000, 166916004, 166917008, 166918003, 166919006, 166921001, 166922008, 166923003, 442545002, 444780001
<b>HbA1c Lab Test</b>	<b>CPT:</b> 83036, 83037
	<b>LOINC:</b> 12773-8, 13457-7, 18261-8, 18262-6, 2089-1, 49132-4, 55440-2, 96259-7
	<b>SNOWMED CT:</b> 43396009, 313835008

## Metabolic Monitoring for Children and Adolescents on Antipsychotics (APM-E) (cont.):

	Codes:	
HbA1c Lab Test Results or Findings	<b>CAT II:</b>	3044F, 3046F, 3051F, 3052F
	<b>SNOWMED CT:</b>	451051000124101, 451061000124104
LDL-C Lab Test	<b>CPT:</b>	80061, 83700, 83701, 83704, 83721
	<b>LOINC:</b>	12773-8, 13457-7, 18261-8, 18262-6, 2089-1, 49132-4, 55440-2, 96259-7
	<b>SNOMED CT:</b>	113079009, 166833005, 166840006, 166841005, 167074000, 167075004, 314036004
LDL-C lab test results or findings	<b>CAT II:</b>	3048F, 3049F, 3050F

## Unhealthy Alcohol Use Screening and Follow-Up (ASF-E):

	Codes:	
Alcohol Abuse Counseling and Surveillance of Alcoholic	<b>ICD-10-CM:</b>	Z71.41
Other Specified Counseling	<b>ICD-10-CM:</b>	Z71.89
Total Score (AUDIT)	<b>LOINC:</b>	75624-7
Total Score (AUDIT-C)	<b>LOINC:</b>	75626-2
How often have you had four or more drinks in one day during the past year (reported)?	<b>LOINC:</b>	75889-6

## Unhealthy Alcohol Use Screening and Follow-Up (ASF-E) (cont.):

		Codes:
How often have you had five or more drinks in one day during the past year (reported)?	<b>LOINC:</b>	88037-7
	<b>CPT:</b>	99408, 99409
Alcohol Counseling or Other Follow Up Care	<b>HCPCS:</b>	G0396, G0397, G0443, G2011, H0005, H0007, H0015, H0016, H0022, H0050, H2035, H2036, T1006, T1012
	<b>ICD-10-CM:</b>	Z71.41
	<b>SNOWMED CT:</b>	20093000, 23915005, 24165007, 64297001, 386449006, 408945004, 408947007, 408948002, 413473000, 707166002, 429291000124102
Alcohol Use Disorder	<b>ICD-10-CM:</b>	F10.10, F10.120, F10.121, F10.129, F10.130, F10.131, F10.132, F10.139, F10.14, F10.150, F10.151, F10.159, F10.180, F10.181, F10.182, F10.188, F10.19, F10.20, F10.220, F10.221, F10.229, F10.230, F10.231, F10.232, F10.239, F10.24, F10.250, F10.251, F10.259, F10.26, F10.27, F10.280, F10.281, F10.282, F10.288, F10.29, F10.920, F10.921, F10.929, F10.930, F10.931, F10.932, F10.939, F10.94, F10.950, F10.951, F10.959, F10.96, F10.97, F10.980, F10.981, F10.982, F10.988, F10.99, K29.20, K29.21, K70.10, K70.11

## Breast Cancer Screening (BCS-E):

Codes:	
Mammography	<b>CPT:</b> 77061-77063, 77065-77067
	<b>LOINC:</b> 24604-1, 24605-8, 24606-6, 24610-8, 26175-0, 26176-8, 26177-6, 26287-3, 26289-9, 26291-5, 26346-7, 26347-5, 26348-3, 26349-1, 26350-9, 26351-7, 36319-2, 36625-2, 36626-0, 36627-8, 36642-7, 36962-9, 37005-6, 37006-4, 37016-3, 37017-1, 37028-8, 37029-6, 37030-4, 37037-9, 37038-7, 37052-8, 37053-6, 37539-4, 37542-8, 37543-6, 37551-9, 37552-7, 37553-5, 37554-3, 37768-9, 37769-7, 37770-5, 37771-3, 37772-1, 37773-9, 37774-7, 37775-4, 38070-9, 38071-7, 38072-5, 38090-7, 38091-5, 38807-4, 38820-7, 38854-6, 38855-3, 42415-0, 42416-8, 46335-6, 46336-4, 46337-2, 46338-0, 46339-8, 46350-5, 46351-3, 46356-2, 46380-2, 48475-8, 48492-3, 69150-1, 69251-7, 69259-0
	<b>SNOWMED CT:</b> 12389009, 24623002, 43204002, 71651007, 241055006, 241057003, 241058008, 258172002, 439324009, 450566007, 709657006, 723778004, 723779007, 723780005, 726551006, 833310007, 866234000, 866235004, 866236003, 866237007, 384151000119104, 392521000119107, 392531000119105, 566571000119105, 572701000119102
<b>Unilateral Mastectomy</b>	<b>CPT:</b> 19303, 19305, 19306, 19307

## Breast Cancer Screening (BCS-E) (cont.):

Codes:	
<b>Bilateral Mastectomy</b>	<b>ICD-10-CM</b> 0HTV0ZZ: Resection of Bilateral Breast, Open Approach
	<b>SNOWMED CT:</b> <ul style="list-style-type: none"> <li>• 14693006: Bilateral subcutaneous mastectomy (procedure)</li> <li>• 14714006: Bilateral mastectomy with excision of bilateral regional lymph nodes (procedure)</li> <li>• 17086001: Modified radical mastectomy, bilateral (procedure)</li> <li>• 22418005: Bilateral simple mastectomy (procedure)</li> <li>• 27865001: Bilateral mastectomy (procedure)</li> <li>• 52314009: Bilateral mastectomy extended simple (procedure)</li> <li>• 60633004: Bilateral subcutaneous mastectomy with synchronous implant (procedure)</li> <li>• 76468001: Bilateral radical mastectomy (procedure) 456903003</li> <li>• 726636007: Prophylactic bilateral mastectomy (procedure)</li> <li>• 836436008: Simple mastectomy of bilateral breasts using robotic assistance (procedure)</li> <li>• 870629001: Bilateral mastectomy for female to male transsexual (procedure)</li> </ul>



**Breast Cancer Screening (BCS-E) (cont.):**

Codes:	
<b>Unilateral Mastectomy Left</b>	<b>ICD-10-PCS:</b> 0HTU0ZZ: Resection of Left Breast, Open Approach
	<p><b>SNOWMED CT:</b></p> <ul style="list-style-type: none"> <li>• 428571003: Mastectomy of left breast (procedure)</li> <li>• 726429001: Radical mastectomy of left breast (procedure)</li> <li>• 726435001: Subcutaneous mastectomy of left breast (procedure)</li> <li>• 726437009: Modified radical mastectomy of left breast (procedure)</li> <li>• 741009001: Simple mastectomy of left breast (procedure)</li> <li>• 741018004: Subcutaneous mastectomy of left breast with prosthetic implant (procedure)</li> <li>• 836437004: Simple mastectomy of left breast using robotic assistance (procedure)</li> <li>• 451211000124109: Prophylactic mastectomy of left breast (procedure)</li> </ul>

**Breast Cancer Screening (BCS-E) (cont.):**

Codes:	
<b>Unilateral Mastectomy Right</b>	<b>ICD-10-CM</b>
	<ul style="list-style-type: none"> <li>• 0HTT0ZZ- Resection of Right Breast, Open Approach</li> </ul>
	<ul style="list-style-type: none"> <li>• 429400009: Mastectomy of right breast (procedure)</li> <li>• 726430006: Radical mastectomy of right breast (procedure)</li> <li>• 726434002: Subcutaneous mastectomy of right breast (procedure)</li> <li>• 726436000: Modified radical mastectomy of right breast (procedure)</li> </ul>
	<b>SNOWMED CT:</b>
	<ul style="list-style-type: none"> <li>• 741010006: Simple mastectomy of right breast (procedure)</li> <li>• 741019007: Subcutaneous mastectomy of right breast with prosthetic implant (procedure)</li> <li>• 836435007: Simple mastectomy of right breast using robotic assistance (procedure)</li> <li>• 451201000124106: Prophylactic mastectomy of right breast (procedure)</li> </ul>

**Breast Cancer Screening (BCS-E) (cont.):**

		Codes:
<b>CDC Race and Ethnicity</b>	<b>CPT/HCPCS/ ICD-10/CVX</b>	1002-5: American Indian or Alaska Native
		2028-9: Asian
		2054-5: Black or African American
		2076-8: Native Hawaiian or Other Pacific Islander
		2106-3: White
		2135-2: Hispanic or Latino
		2186-5: Not Hispanic or Latino

**Cervical Cancer Screening (CCS-E):**

		Codes:
<b>Cervical Cytology Lab Test</b>	<b>CPT:</b>	88141, 88142, 88143, 88147, 88148, 88150, 88152, 88153, 88164, 88165, 88166, 88167, 88174, 88175
	<b>HCPCS:</b>	G0123, G0124, G0141, G0143, G0144, G0145, G0147, G0148, P3000, P3001, Q0091
	<b>LOINC:</b>	10524-7, 18500-9, 19762-4, 19764-0, 19765-7, 19766-5, 19774-9, 33717-0, 47527-7, 47528-5
	<b>SNOWMED CT:</b>	171149006, 416107004, 417036008, 440623000, 448651000124104

**Cervical Cancer Screening (CCS-E) (cont.):**

<p><b>Cervical Cytology Result or Finding</b></p>	<p><b>Codes:</b></p> <p>168406009, 168407000, 168408005, 168410007, 168414003, 168415002, 168416001, 168424006, 250538001, 268543007, 269957009, 269958004, 269959007, 269960002, 269961003, 269963000, 275805003, 281101005, 309081009, 310841002, 310842009, 416030007, 416032004, 416033009, 439074000, 439776006, 439888000, 441087007, 441088002, 441094005, 441219009, 441667007, 700399008, 700400001, 1155766001, 62051000119105, 62061000119107, 98791000119102</p> <p><b>SNOWMED CT:</b></p>
<p><b>High Risk HPV Lab Test</b></p>	<p><b>CPT:</b> 87624, 87625</p> <hr/> <p><b>HCPCS:</b> G0476</p> <hr/> <p><b>LOINC:</b> 21440-3, 30167-1, 38372-9, 59263-4, 59264-2, 59420-0, 69002-4, 71431-1, 75694-0, 77379-6, 77399-4, 77400-0, 82354-2, 82456-5, 82675-0, 95539-3</p> <hr/> <p><b>SNOWMED CT:</b> 35904009, 448651000124104</p>
<p><b>High Risk HPV Test Result or Finding</b></p>	<p><b>SNOWMED CT:</b> 718591004</p>

## Childhood Immunization Status (CIS-E):

Codes to identify immunizations:

	Codes:	
<b>Anaphylaxis Due to Hepatitis B Vaccine (Disorder)</b>	<b>SNOMED CT:</b>	428321000124101
<b>Anaphylaxis Due to Rotavirus Vaccine (disorder)</b>	<b>SNOMED CT:</b>	428331000124103
<b>Anaphylaxis Due to Haemophilus Influenzae Type B Vaccine (Disorder)</b>	<b>SNOMED CT:</b>	433621000124101
<b>DTaP Immunization</b>	<b>CVX:</b>	20, 50, 106, 107, 110, 120, 146
	<b>CPT:</b>	90697, 90698, 90700, 90723
<b>DTaP Vaccine Procedure</b>	<b>SNOMED CT:</b>	170395004, 170396003, 170397007, 170399005, 170400003, 170401004, 170402006, 310306005, 310307001, 310308006, 312870000, 313383003, 390846000, 390865008, 399014008, 412755006, 412756007, 412757003, 412762002, 412763007, 412764001, 414001002, 414259000, 414620004, 415507003, 415712004, 770608009, 770616000, 770617009, 770618004, 787436003, 787438002, 866158005, 866159002, 866226006, 428251000124104, 571571000119105, 572561000119108, 16290681000119103, 16298561000119108
<b>Inactivated Polio Vaccine (IPV) Immunization</b>	<b>CVX:</b>	10, 89, 110, 120, 146

## Childhood Immunization Status (CIS-E) (cont.):

		Codes:
<b>Inactivated Polio Vaccine (IPV) Procedure</b>	<b>CPT:</b>	90697, 90698, 90713, 90723
	<b>SNOMED CT:</b>	310306005, 310307001, 310308006, 312869001, 312870000, 313383003, 390865008, 396456003, 412762002, 412763007, 412764001, 414001002, 414259000, 414619005, 414620004, 415507003, 415712004, 416144004, 416591003, 417211006, 417384007, 417615007, 786846001, 866186002, 866227002, 868266002, 868267006, 868268001, 868273007, 868274001, 868276004, 868277008, 870670004, 1162640003, 572561000119108, 16290681000119103
<b>Measles, Mumps, and Rubella (MMR) Immunization</b>	<b>CVX:</b>	03, 94
<b>Measles, Mumps and Rubella (MMR) Vaccine Procedure</b>	<b>CPT</b>	90707, 90710
	<b>SNOMED:</b>	38598009, 170433008, 432636005, 433733003, 150971000119104, 571591000119106, 572511000119105
<b>Haemophilus Influenzae Type B (HiB) Immunization</b>	<b>CVX:</b>	17, 46, 47, 48, 49, 50, 51, 120, 146, 148

## Childhood Immunization Status (CIS-E) (cont.):

		Codes:
Haemophilus Influenzae Type B (HiB) Vaccine Procedure	CPT:	90644, 90647, 90648, 90697, 90698, 90748
	SNOMED CT:	127787002, 170343007, 170344001, 170345000, 170346004, 310306005, 310307001, 310308006, 312869001, 312870000, 414001002, 414259000, 415507003, 415712004, 770608009, 770616000, 770617009, 770618004, 786846001, 787436003, 787438002, 16292241000119109
Varicella Zoster (VZV) Immunization	CVX:	21, 94
Varicella Zoster (VZV) Vaccine Procedure	CPT:	90710, 90716
	SNOMED CT:	425897001, 428502009, 473164004, 571611000119101
PCV	CVX:	109, 133, 152
	CPT:	90670
Hepatitis A Immunization	CVX:	31, 83, 85
Hepatitis A Vaccine Procedure	CPT:	90632, 90633, 90634
	SNOMED CT:	170378007, 170379004, 170380001, 170381002, 170434002, 170435001, 170436000, 170437009, 243789007, 312868009, 313188000, 313189008, 314177003, 314178008, 314179000, 394691002, 412742005, 412743000, 871752004, 871753009, 871754003, 571511000119102



## Childhood Immunization Status (CIS-E) (cont.):

	Codes:	
<b>Rotavirus (two or three dose) Immunization</b>	<b>CVX:</b>	Two-dose: 119 Three-dose: 116, 122
<b>Rotavirus Vaccine (two or three dose) Procedure</b>	<b>CPT:</b>	Two-dose: 90681 Three-dose: 90680
	<b>SNOMED CT:</b>	Two-dose: 434741000124104 Three dose: 434731000124109
<b>Influenza Immunization</b>	<b>CVX:</b>	88, 140, 141, 150, 153, 155, 158, 161, 171, 186
	<b>CPT:</b>	90655, 90657, 90661, 90673, 90685, 90686, 90687, 90688, 90689, 90756
	<b>SNOMED CT:</b>	86198006, 786847005
<b>Influenza Virus LAIV Immunization</b>	<b>CVX:</b>	<ul style="list-style-type: none"> <li>• 111: Influenza virus vaccine, live attenuated, for intranasal</li> <li>• 149: Influenza, live, intranasal, quadrivalent</li> </ul>
<b>Influenza Virus LAIV Vaccine Procedure</b>	<b>CPT:</b>	90660, 90672

## Utilization of the PHQ-9 to Monitor Depression Symptoms for Adolescents and Adults (DMS-E):

		Codes:
<b>Major Depression or Dysthymia</b>	<b>ICD10MC:</b>	F32.0, F32.1, F32.2, F32.3, F32.4, F32.5, F32.9, F33.0, F33.1, F33.2, F33.3, F33.40, F33.41, F33.42, F33.9, F34.1
<b>Major Depression or Dysthymia</b>	<b>SNOMED CT:</b>	832007, 2506003, 2618002, 3109008, 14183003, 15193003, 15639000, 18818009, 19527009, 19694002, 20250007, 25922000, 28475009, 30605009, 33078009, 33135002, 33736005, 36170009, 36474008, 36923009, 38451003, 38694004, 39809009, 40379007, 42810003, 42925002, 46244001, 60099002, 63412003, 63778009, 66344007, 67711008, 69392006, 70747007, 71336009, 73867007, 75084000, 76441001, 77911002, 78667006, 79298009, 83176005, 85080004, 87512008, 191604000, 191610000, 191611001, 191613003, 231499006, 268621008, 274948002, 300706003, 319768000, 320751009, 370143000, 430852001
<b>Patient Health Questionnaire 9 item (PHQ-9) total score (reported)</b>	<b>LOINC:</b>	44261-6
<b>Patient Health Questionnaire-9: Modified for Teens total score (reported.PHQ.teen)</b>	<b>LOINC:</b>	89204-2

## Depression Remission or Response for Adolescents and Adults (DRR-E):

Codes:	
<b>Patient Health Questionnaire 9 item (PHQ-9) total score (reported]</b>	<b>LOINC:</b> 44261-6
<b>Patient Health Questionnaire-9: Modified for teens total score (reported.PHQ.teen)</b>	<b>LOINC:</b> 89204-2
<b>Major Depression or Dysthymia</b>	<b>ICD-10-MC:</b> F32.0, F32.1, F32.2, F32.3, F32.4, F32.5, F32.9, F33.0, F33.1, F33.2, F33.3, F33.40, F33.41, F33.42, F33.9, F34.1
	<b>SNOMED CT:</b> 832007, 2506003, 2618002, 3109008, 14183003, 15193003, 15639000, 18818009, 19527009, 9694002, 20250007, 25922000, 28475009, 30605009, 33078009, 33135002, 33736005, 36170009, 36474008, 36923009, 38451003, 38694004, 39809009, 40379007, 42810003, 42925002, 46244001, 60099002, 63412003, 63778009, 66344007, 67711008, 69392006, 70747007, 71336009, 73867007, 75084000, 76441001, 77911002, 78667006, 79298009, 83176005, 85080004, 87512008, 191604000, 191610000, 191611001, 191613003, 231499006, 268621008, 274948002, 300706003, 319768000, 320751009, 370143000, 430852001

**Depression Remission or Response for Adolescents and Adults (DRR-E) (cont.):**

Codes:	
	90791, 90792, 90832, 90834, 90837, 98960, 98961, 98962, 98966, 98967, 98968, 98970, 98971, 98972, 99078, 99202, 99203, 99204, 99205, 99211, 99212, 99213, 99214, 99215, 99242, 99243, 99244, 99245, 99341, 99342, 99344, 99345, 99347, 99348, 99349, 99350, 99381, 99382, 99383, 99384, 99385, 99386, 99387, 99391, 99392, 99393, 99394, 99395, 99396, 99397, 99401, 99402, 99403, 99404, 99411, 99412, 99421, 99422, 99423, 99441, 99442, 99443, 99457, 99483, 99492, 99493, 99494, 99510
<b>CPT:</b>	
<b>Interactive Outpatient Encounter</b>	G0071, G0155, G0176, G0177, G0409, G0410, G0411, G0463, G0512, G2010, G2012, , G2250, G2251, G2252, H0002, H0004, H0031, H0034, H0035, H0036, H0037, H0039, H0040, H2000, H2001, H2010, H2011, H2012, H2013, H2014, H2015, H2016, H2017, H2018, H2019, H2020, S0201, S9480, S9484, S9485, T1015
<b>HCPCS:</b>	
	19681004, 90526000, 185317003, 185349003, 185463005, 185465003, 270427003, 270430005, 308335008, 314849005, 386472008, 386473003, 390906007, 401267002, 406547006, 439708006
<b>SNOMED CT:</b>	

## Depression Screening and Follow-Up for Adolescents and Adults (DSF-E):

	Codes:	
Exercise counseling	ICD-10-CM:	Z71.82
Patient Health Questionnaire 9 item (PHQ-9) total score (reported)	LOINC:	44261-6
Geriatric depression scale (GDS) total	LOINC:	48544-1
Patient Health Questionnaire 2 item (PHQ-2) total score (reported)	LOINC:	55758-7
Edinburgh Postnatal Depression Scale (EPDS)	LOINC:	71354-5
Total score [M3]	LOINC:	71777-7
PROMIS-29 Depression score T-score	LOINC:	71965-8
<i>Patient Health Questionnaire-9: Modified for Teens</i> total score (reported.PHQ.teen)	LOINC:	89204-2
<i>Center for Epidemiologic Studies Depression Scale-Revised total score (CESD-R)</i>	LOINC:	89205-9
<i>Beck Depression Inventory Fast Screen (BDI)</i> total score	LOINC:	89208-3
<i>Beck Depression Inventory II (BDI)</i> total score	LOINC:	89209-1
Total score (CUDOS)	LOINC:	90221-3
Final score (DUKE-AD)	LOINC:	90853-3
Symptoms of depression (finding)	SNOMED:	394924000, 788976000

**Depression Screening and Follow-Up for Adolescents and Adults (DSF-E) (cont.):**

Codes:	
Depression	<p><b>ICD-10-CM:</b> F01.51, F32.0, F32.1, F32.2, F32.3, F32.4, F32.5, F32.81, F32.89, F32.9, F33.0, F33.1, F33.2, F33.3, F33.40, F33.41, F33.42, F33.8, F33.9, F34.1, F34.81, F34.89, F43.21, F43.23, F53.0, F53.1, O90.6, O99.340, O99.341, O99.342, O99.343, O99.344, O99.345</p>
	<p><b>SNOMED CT:</b> 832007, 2506003, 2618002, 3109008, 14183003, 15193003, 15639000, 18818009, 19527009, 19694002, 20250007, 25922000, 28475009, 33078009, 35489007, 36170009, 36474008, 36923009, 38451003, 38694004, 39809009, 40379007, 40568001, 42925002, 48589009, 63778009, 66344007, 67711008, 69392006, 71336009, 73867007, 75084000, 75837004, 7641001, 77486005, 77911002, 78667006, 79298009, 81319007, 83176005, 84760002, 85080004, 87512008, 191610000, 191611001, 191613003, 191616006, 191659001, 192080009, 231504006, 231542000, 268621008, 319768000, 320751009, 370143000, 430852001, 442057004</p>
Depression Case Management Encounter	<p><b>CPT:</b> 99366, 99492, 99493, 99494</p>
	<p><b>HCPCS:</b> G0512, T1016, T1017, T2022, T2023</p>
	<p><b>SNOMED CT:</b> 182832007, 225333008, 385828006, 386230005, 409022004, 410216003, 410219005, 410328009, 410335001, 410346003, 410347007, 410351009, 410352002, 410353007, 410354001, 410356004, 410360001, 410363004, 410364005, 410366007, 416341003, 416584001, 424490002, 425604002, 737850002</p>

## Depression Screening and Follow-Up for Adolescents and Adults (DSF-E) (cont.):

### Codes:

**Depression or Other  
Behavioral Health  
Condition**

### ICD-10-CM:

F01.511, F01.518, F06.4, F10.180, F10.280, F10.980, F11.188, F11.288, F11.988, F12.180, F12.280, F12.980, F13.180, F13.280, F13.980, F14.180, F14.280, F14.980, F15.180, F15.280, F15.980, F16.180, F16.280, F16.980, F18.180, F18.280, F18.980, F19.180, F19.280, F19.980, F20.0, F20.1, F20.2, F20.3, F20.5, F20.81, F20.89, F20.9, F21, F22, F23, F24, F25.0, F25.1, F25.8, F25.9, F28, F29, F30.10, F30.11, F30.12, F30.13, F30.2, F30.3, F30.4, F30.8, F30.9, F31.0, F31.10, F31.11, F31.12, F31.13, F31.2, F31.30, F31.31, F31.32, F31.4, F31.5, F31.60, F31.61, F31.62, F31.63, F31.64, F31.70, F31.71, F31.72, F31.73, F31.74, F31.75, F31.76, F31.77, F31.78, F31.81, F31.89, F31.9, F32.0, F32.1, F32.2, F32.3, F32.4, F32.5, F32.81, F32.89, F32.9, F32.A, F33.0, F33.1, F33.2, F33.3, F33.40, F33.41, F33.42, F33.8, F33.9, F34.0, F34.1, F34.81, F34.89, F34.9, F39, F40.00, F40.01, F40.02, F40.10, F40.11, F40.210, F40.218, F40.220, F40.228, F40.230, F40.231, F40.232, F40.233, F40.240, F40.241, F40.242, F40.243, F40.248, F40.290, F40.291, F40.298, F40.8, F40.9, F41.0, F41.1, F41.3, F41.8, F41.9, F42.2, F42.3, F42.4, F42.8, F42.9, F43.0, F43.10, F43.11, F43.12, F43.20, F43.21, F43.22, F43.23, F43.24, F43.25, F43.29, F43.81, F43.89, F43.9, F44.89, F45.21, F51.5, F53.0, F53.1, F60.0, F60.1, F60.2, F60.3, F60.4, F60.5, F60.6, F60.7, F60.81, F60.89, F60.9, F63.0, F63.1, F63.2, F63.3, F63.81, F63.89, F63.9, F68.10, F68.11, F68.12, F68.13, F68.8, F68.A, F84.0, F84.2, F84.3, F84.5, F84.8, F84.9, F90.0, F90.1, F90.2, F90.8, F90.9, F91.0, F91.1, F91.2, F91.3, F91.8, F91.9, F93.0, F93.8, F93.9, F94.0, F94.1, F94.2, F94.8, F94.9, O90.6, O99.340, O.99.341, O99.342, O99.343, O99.344, O99.345



**Depression Screening and Follow-Up for Adolescents and Adults (DSF-E) (cont.):**

**Codes:**

**Depression or Other Behavioral Health Condition (cont.)**

**SNOMED: CT**

109006, 162004, 281004, 600009, 832007, 899001, 1145003, 1196001, 1376001, 1380006, 1383008, 1499003, 1686006, 1816003, 1855002, 1973000, 2312009, 2403008, 2506003, 2618002, 2815001, 3109008, 3158007, 3503000, 3530005, 3914008, 4306003, 4441000, 4926007, 4932002, 4997005, 5095008, 5158005, 5444000, 5464005, 5507002, 5509004, 5510009, 5703000, 6348008, 7025000, 7052005, 7200002, 7291006, 7397008, 7461003, 7794004, 8185002, 8635005, 8837000, 9167000, 9340000, 9674006, 9760005, 10278007, 10327003, 10586006, 10875004, 10981006, 11061003, 11806006, 11941006, 12939007, 12969000, 13313007, 13438001, 13581000, 13601005, 13670005, 13746004, 14070001, 14077003, 14144000, 14183003, 14291003, 14495005, 14784000, 15193003, 15277004, 15639000, 15945005, 15977008, 16295005, 16506000, 16805009, 16966009, 16990005, 17155009, 17226007, 17262008, 17496003, 17782008, 17961008, 18003009, 18085000, 18260003, 18478005, 18573003, 18653004, 18689007, 18818009, 18941000, 19300006, 19445006, 19527009, 19694002, 19766004, 20010003, 20250007, 20385005, 20876004, 20960007, 21586000, 21634003, 21897009, 21900002, 22121000, 22230001, 22407005, 22419002, 23148009, 23560001, 23645006, 24121004, 24125008, 24315006, 24781009, 25501002, 25766007, 25922000, 26025008, 26203008, 26453000, 26472000, 26516009, 26530004, 26665006, 26714005, 27387000, 27544004, 27720003, 27956007, 28357009, 28368009, 28475009, 28663008, 28676002, 28857002, 28864000, 28884001, 29212009, 29599000, 29733004

## Depression Screening and Follow-Up for Adolescents and Adults (DSF-E) (cont.):

Depression or Other Behavioral Health Condition (cont.)	SNOMED CT:	Codes:
		29929003, 30059008, 30310000, 30336007, 30491001, 30509009, 30520009, 30605009, 30687003, 30935000, 31027006, 31177006, 31358003, 31373002, 31446002, 31611000, 31648009, 31658008, 31715000, 31781004, 32009006, 32174002, 32358001, 32388005, 32552001, 32721004, 32875003, 32880007, 33078009, 33135002, 33323008, 33380008, 33449004, 33693007, 33736005, 33871004, 34116005, 34315001, 34938008, 35218008, 35252006, 35253001, 35481005, 35489007, 35607004, 35722002, 35827000, 35846004, 35919005, 36170009, 36217008, 36474008, 36583000, 36622002, 36923009, 37331004, 37739004, 37746008, 37868008, 37872007, 37941009, 38295006, 38328002, 38368003, 38451003, 38547003, 38694004, 39003006, 39465007, 39610001, 39807006, 39809009, 39951001, 40379007, 40568001, 40571009, 40673001, 40926005, 40987004, 41021005, 41083005, 41526007, 41552001, 41832009, 41836007, 42344001, 42594001, 42810003, 42868002, 42925002, 43150009, 43497001, 43568002, 43614003, 43769008, 44031002, 44124003, 44376007, 44966003, 45479006, 45677003, 45912004, 46206005, 46229002, 46244001, 46721000, 46975003, 47372000, 47447001, 47505003, 47664006, 47916000, 48500005, 48589009, 48826008, 48937005, 49271002, 49468007, 49481000, 49512000, 49564006, 50026000, 50320000, 50705009, 50722006, 50878001, 50933003, 50983008, 51133006, 51443000, 51493001, 51637008, 51771007, 52702003, 52824009, 52866005, 52910006, 52954000, 53049002, 53050002, 53467004, 53607008, 53936005, 53956006, 54319003, 54417002, 54502004, 54587008, 54761006, 55009008, 55341008, 55516002

**Depression Screening and Follow-Up for Adolescents and Adults (DSF-E) (cont.):**

**Codes:**

**Depression or Other Behavioral Health Condition (cont.)**

**SNOMED CT:**

55668003, 55967005, 56576003, 56627002, 56641006, 56882008, 57194009, 57588009, 57715001, 58214004, 58329000, 58535001, 58647003, 58703003, 59216005, 59617007, 59645001, 59651006, 59923000, 60099002, 60123008, 61104008, 61144001, 61157009, 61180001, 61212007, 61403008, 61569007, 61831009, 61901004, 62239001, 62351001, 63181006, 63204009, 63249007, 63393005, 63412003, 63649001, 63701002, 63778009, 63909006, 63983005, 64060000, 64165008, 64731001, 64905009, 65042007, 65064003, 66307007, 66344007, 66347000, 66381006, 66590003, 66631006, 66936004, 67002003, 67123006, 67195008, 67711008, 68019004, 68569003, 68618008, 68890003, 68963006, 68995007, 69322001, 69361009, 69392006, 69479009, 69482004, 70328006, 70546001, 70691001, 70747007, 70814008, 70932007, 71103003, 71294008, 71328000, 71336009, 71787009, 71959007, 71961003, 71984005, 72366004, 72861004, 73097000, 73462009, 73471000, 73867007, 74010007, 74266001, 74686005, 74732009, 74850006, 74934004, 75084000, 75122001, 75360000, 75752004, 75837004, 76105009, 76129002, 76236006, 76441001, 76566000, 76812003, 76868007, 77355000, 77475008, 77486005, 77675002, 77815007, 77911002, 78004001, 78269000, 78358001, 78640000, 78667006, 79204003, 79298009, 79524000, 79584002, 79842004, 79866005, 80711002, 80868005, 81319007, 81463002, 82096005, 82218004, 82339009, 82415003, 82494000, 82738004, 82998009, 83168008, 83176005, 83225003, 83253003, 83367009, 83458005, 83501007, 83631006, 83746006, 83890006, 84466009, 84760002, 84788008, 84984002, 85061001, 85080004

**Depression Screening and Follow-Up for Adolescents and Adults (DSF-E) (cont.):**

Depression or Other Behavioral Health Condition (cont.)	SNOMED CT:	Codes:
		<p>85248005, 85561006, 85821003, 85861002, 86058007, 87132004, 87203005, 87414006, 87512008, 87798009, 87842000, 87950005, 87991007, 88740003, 88845000, 88939009, 88975006, 89415002, 89451009, 89618007, 89948007, 90755006, 90790003, 93461009, 95637005, 106013002, 106014008, 106015009, 109805003, 111475002, 111476001, 111477005, 111479008, 111480006, 111482003, 111483008, 111484002, 111485001, 111487009, 111490003, 111491004, 126943008, 128293007, 129104009, 129604005, 129606007, 162218007, 162313000, 162702000, 162722001, 187921002, 191447007, 191455000, 191457008, 191458003, 191459006, 191466007, 191471000, 191475009, 191476005, 191478006, 191480000, 191483003, 191484009, 191485005, 191486006, 191492000, 191493005, 191494004, 191495003, 191496002, 191499009, 191501001, 191508007, 191526005, 191527001, 191531007, 191542003, 191547009, 191548004, 191554003, 191555002, 191559008, 191561004, 191562006, 191563001, 191564007, 191565008, 191567000, 191569002, 191570001, 191571002, 191572009, 191574005, 191577003, 191583000, 191584006, 191586008, 191588009, 191590005, 191592002, 191593007, 191595000, 191597008, 191604000, 191610000, 191611001, 191613003, 191616006, 191618007, 191620005, 191621009, 191623007, 191625000, 191627008, 191629006, 191630001, 191634005, 191636007, 191638008, 191639000, 191641004</p>

**Depression Screening and Follow-Up for Adolescents and Adults (DSF-E) (cont.):**

**Codes:**

**Depression or Other Behavioral Health Condition (cont.)**

**SNOMED CT:**

191643001, 191659001, 91667009,  
 191668004, 191670008, 191672000,  
 191676002, 191678001, 191680007,  
 191687005, 191689008, 191690004,  
 191692007, 191693002, 191696005,  
 191697001, 191714002, 191722009,  
 191724005, 191725006, 191726007,  
 191736004, 191737008, 191738003,  
 191753006, 191765005, 191766006,  
 191772006, 191773001, 191774007,  
 191787001, 191811004, 191812006,  
 191813001, 191966002, 192014006,  
 192037000, 192038005, 192039002,  
 192041001, 192042008, 192044009,  
 192046006, 192049004, 192051000,  
 192052007, 192054008, 192056005,  
 192057001, 192058006, 192061007,  
 192063005, 192064004, 192065003,  
 192069009, 192072002, 192073007,  
 192079006, 192080009, 192082001,  
 192092009, 192097003, 192099000,  
 192100008, 192108001, 192110004,  
 192119003, 192127007, 192131001,  
 192132008, 192147004, 192362008,  
 192527004, 192562009, 192611004,  
 192616009, 192631000, 197480006,  
 199257008, 199259006, 199260001,  
 199261002, 199262009, 229623002,  
 229699006, 229700007, 229701006,  
 229715008, 229729009, 229740001,  
 229744005, 229745006, 230334008,  
 230455006, 231437006, 231438001,  
 231442003, 231443008, 231444002,  
 231445001, 231446000, 231449007,  
 231450007, 231451006, 231452004,  
 231453009, 231454003, 231455002,  
 231456001, 231467000, 231485007,  
 231487004, 231489001, 231494001

## Depression Screening and Follow-Up for Adolescents and Adults (DSF-E) (cont.):

### Codes:

**Depression or  
Other Behavioral  
Health Condition  
(cont.)**

**SNOMED  
CT:**

231496004, 231500002, 231504006, 231516000,  
231520001, 231521002, 231522009, 231523004,  
231524005, 231525006, 231526007, 231527003,  
231528008, 231530005, 231536004, 231537008,  
231538003, 231539006, 231540008, 231541007,  
231542000, 231864002, 233690008, 237351003,  
237352005, 238961003, 238966008, 238967004,  
238972008, 238973003, 238974009, 238975005,  
238976006, 238977002, 238978007, 238979004,  
247803002, 247804008, 267320004, 268612007,  
268617001, 268619003, 268621008, 268622001,  
268624000, 268633003, 268634009,  
268658008, 268661009, 268662002, 268664001,  
268666004, 268667008, 268668003, 268669006,  
268673009, 268734000, 270901009, 270902002,  
270905000, 271428004, 271952001, 274948002,  
274952002, 274953007, 275473003, 275474009,  
276296007, 276297003, 278506006, 278508007,  
278852008, 278853003, 279611005, 280032002,  
280943007, 280949006, 280994000, 286933003,  
300706003, 300979000, 301643003,  
302507002, 307417003, 310495003, 310496002,  
310497006, 311173003, 312098001, 312936002,  
313182004, 313224008, 313915006, 317816007,  
318784009, 319768000, 320751009, 357705009,  
370143000, 371024007, 371026009, 371596008,  
371599001, 371600003, 371604007, 371631005,  
373618009, 386701004, 386810004, 386820009,  
386821008, 386822001, 386823006, 386824000,  
386825004, 398066007, 402732001, 402733006,  
402735004, 403578003, 403579006, 403590001,  
403593004, 403594005, 403595006,  
404906000, 406506008, 408856003, 408857007,  
416340002, 417143004, 417294004, 420774007,  
425914008, 425919003, 426174008, 426881004,  
427469003, 427975003, 428687006, 428703001,  
429672007, 430744005, 430751001, 430852001,  
430909002, 432091002, 439960005, 441704009

**Depression Screening and Follow-Up for Adolescents and Adults (DSF-E) (cont.):**

**Codes:**

**Depression or  
Other Behavioral  
Health Condition  
(cont.)**

**SNOMED  
CT:**

441711008, 441716003, 441833000, 442057004,  
442245003, 442314000, 442351006, 443919007,  
446175003, 446180007, 450714000,  
473452003, 473456000, 473457009, 609225004,  
698689005, 698690001, 698692009, 698693004,  
698696007, 698697003, 698699000, 698700004,  
698701000, 698946008, 698947004, 698951002,  
699241002, 702356009, 702450004, 702732007,  
702815001, 708037001, 712823008, 712824002,  
712850003, 712884004, 713491003, 713583005,  
713862009, 714829008, 715737004, 715924009,  
716096005, 716199000, 716578009, 718393002,  
719592004, 719600006, 720451004, 720452006,  
720453001, 720454007, 720455008, 722287002,  
723332005, 723899008, 723900003, 723901004,  
723903001, 723905008, 723913009, 724673008,  
724674002, 724675001, 724693000, 724706006,  
724718002, 724719005, 724730008, 724733005,  
724734004, 724735003, 724736002, 724737006,  
724738001, 724739009, 724740006, 724741005,  
724742003, 726772006, 733623005, 735549008,  
735550008, 737225007, 762327001, 762332000,  
762347009, 762509000, 762516004, 765176007,  
766824003, 767631007, 767632000, 767633005,  
767635003, 767636002, 770790004, 771448004,  
771512003, 782501005, 783089006, 789061003,  
789399002, 870260008, 870261007, 870262000,  
870263005, 870264004, 870265003, 870266002,  
870267006, 870268001, 870269009, 870270005,  
870280009, 870282001, 870303005, 870304004,  
870305003, 870306002, 870307006, 870308001,  
1153575004, 251000119105, 261000119107,  
271000119101, 281000119103, 7031000119100,  
18491000119109, 21071000119101,  
21831000119109, 22641000119109,  
22981000119106, 23601000119102,  
23741000119105, 31081000119101,  
39951000119105, 60401000119104

## Depression Screening and Follow-Up for Adolescents and Adults (DSF-E) (cont.):

		Codes:
<b>Depression or Other Behavioral Health Condition (cont.)</b>	<b>SNOMED CT:</b>	62211000119103, 62231000119108, 89381000119107, 89501000119108, 92501000119101, 94631000119100, 97571000119109, 104851000119103, 130121000119104, 133091000119105, 133121000119109, 153071000119108, 270291000119109, 288271000119103, 288421000119100, 288511000119108, 288751000119101, 288851000119106, 288861000119108, 368361000119108, 1740001000004102, 0811121000119102, 10811161000119107, 16238741000119105, 16264621000119109, 16264821000119108, 16264901000119109, 16265061000119105, 16265301000119106, 16265951000119109, 16266831000119100, 6266991000119108



## Immunizations for Adolescents (IMA-E):

	Codes:	
<b>Meningococcal Immunization</b>	<b>CVX:</b>	32, 108, 114, 136, 147, 167, 203
<b>Meningococcal Vaccine Procedure</b>	<b>CPT:</b>	90619, 90733, 90734
	<b>SNOMED CT:</b>	390892002, 428271000124109
<b>Tdap Immunization</b>	<b>CVX:</b>	115
<b>Tdap Vaccine Procedure</b>	<b>CPT:</b>	90715
	<b>SNOMED CT:</b>	428251000124104
<b>HPV Immunization</b>	<b>CVX:</b>	62, 118, 137, 165
<b>HPV Vaccine Procedure</b>	<b>CPT:</b>	90649, 90650, 90651
	<b>SNOMED CT:</b>	428570002, 428741008, 428931000, 429396009, 734152003, 734154002, 99501000119107, 140611000119104, 16300531000119107
<b>CDC race and ethnicity</b>	<b>CPT/HCPCS/ICD-10/CVX</b>	1002-5: American Indian or Alaska Native 2028-9: Asian 2054-5: Black or African American 2076-8: Native Hawaiian or Other Pacific Islander 2106-3: White 2135-2: Hispanic or Latino 2186-5: Not Hispanic or Latino

**Postpartum Depression Screening and Follow-Up (PDS-E):**

Codes:	
<b>Behavioral Health Encounter</b>	<b>CPT:</b> 90791, 90792, 90832, 90833, 90834, 90836, 90837, 90838, 90839, 90845, 90846, 90847, 90849, 90853, 90865, 90867, 90868, 90869, 90870, 90875, 90876, 90880, 90887, 99484, 99492, 99493
	<b>HCPCS:</b> G0155, G0176, G0177, G0409, G0410, G0411, G0511, G0512, H0002, H0004, H0031, H0034, H0035, H0036, H0037, H0039, H0040, H2000, H2001, H2010, H2011, H2012, H2013, H2014, H2015, H2016, H2017, H2018, H2019, H2020, S0201, S9480, S9484, S9485
	<b>SNOMED CT:</b> 5694008, 10197000, 10997001, 38756009, 45392008, 79094001, 88848003, 90407005, 91310009, 165171009, 165190001, 225337009, 370803007, 372067001, 385721005, 385724002, 385725001, 385726000, 385727009, 385887004, 385889001, 385890005, 401277000, 410223002, 410224008, 410225009, 410226005, 410227001, 410228006, 410229003, 410230008, 410231007, 410232000, 410233005, 410234004
<b>Symptoms of Depression (Finding)</b>	<b>SNOMED CT:</b> 394924000, 788976000
<b>Depression Case Manager Encounter</b>	<b>CPT:</b> 99366, 99492, 99493, 99494
	<b>HCPCS:</b> G0512, T1016, T1017, T2022, T2023
	<b>SNOMED CT:</b> 182832007, 225333008, 385828006, 386230005, 409022004, 410216003, 410219005, 410328009, 410335001, 410346003, 410347007, 410351009, 410352002, 410353007, 410354001, 410356004, 410360001, 410363004, 410364005, 410366007, 416341003, 416584001, 424490002, 425604002, 737850002

## Postpartum Depression Screening and Follow-Up (PDS-E) (cont.):

### Codes:

**Depression or  
Other Behavioral  
Health Condition**

### ICD-10-PCS:

F01.511, F01.518, F06.4, F10.180, F10.280, F10.980, F11.188, F11.288, F11.988, F12.180, F12.280, F12.980, F13.180, F13.280, F13.980, F14.180, F14.280, F14.980, F15.180, F15.280, F15.980, F16.180, F16.280, F16.980, F18.180, F18.280, F18.980, F19.180, F19.280, F19.980, F20.0, F20.1, F20.2, F20.3, F20.5, F20.81, F20.89, F20.9, F21, F22, F23, F24, F25.0, F25.1, F25.8, F25.9, F28, F29, F30.10, F30.11, F30.12, F30.13, F30.2, F30.3, F30.4, F30.8, F30.9, F31.0, F31.10, F31.11, F31.12, F31.13, F31.2, F31.30, F31.31, F31.32, F31.4, F31.5, F31.60, F31.61, F31.62, F31.63, F31.64, F31.70, F31.71, F31.72, F31.73, F31.74, F31.75, F31.76, F31.77, F31.78, F31.81, F31.89, F31.9, F32.0, F32.1, F32.2, F32.3, F32.4, F32.5, F32.81, F32.89, F32.9, F33.0, F33.1, F33.2, F33.3, F33.40, F33.41, F33.42, F33.8, F33.9, F34.0, F34.1, F34.81, F34.89, F34.9, F39, F40.00, F40.01, F40.02, F40.10, F40.11, F40.210, F40.218, F40.220, F40.228, F40.230, F40.231, F40.232, F40.233, F40.240, F40.241, F40.242, F40.243, F40.248, F40.290, F40.291, F40.298, F40.8, F40.9, F41.0, F41.1, F41.3, F41.8, F41.9, F42.2, F42.3, F42.4, F42.8, F42.9, F43.0, F43.10, F43.11, F43.12, F43.20, F43.21, F43.22, F43.23, F43.24, F43.25, F43.29, F43.8, F43.9, F44.89, F45.21, F51.5, F53.0, F53.1, F60.0, F60.1, F60.2, F60.3, F60.4, F60.5, F60.6, F60.7, F60.81, F60.89, F60.9, F63.0, F63.1, F63.2, F63.3, F63.81, F63.89, F63.9, F68.10, F68.11, F68.12, F68.13, F68.8, F68.A, F84.0, F84.2, F84.3, F84.5, F84.8, F84.9, F90.0, F90.1, F90.2, F90.8, F90.9, F91.0, F91.1, F91.2, F91.3, F91.8, F91.9, F93.0, F93.8, F93.9, F94.0, F94.1, F94.2, F94.8, F94.9, O90.6, O99.340, O99.341, O99.342, O99.343, O99.344, O99.345

## Postpartum Depression Screening and Follow-Up (PDS-E) (cont.):

### Codes:

**Depression or  
Other Behavioral  
Health Condition  
(cont.)**

**SNOMED  
CT:**

109006, 162004, 281004, 600009, 832007,  
899001, 1145003, 1196001, 1376001, 1380006,  
1383008, 1499003, 1686006, 1816003, 1855002,  
1973000, 2312009, 2403008, 2506003,  
2618002, 2815001, 3109008, 3158007, 3503000,  
3530005, 3914008, 4306003, 4441000,  
4926007, 4932002, 4997005, 5095008, 5158005,  
5444000, 5464005, 5507002, 5509004,  
5510009, 5703000, 6348008, 7025000,  
7052005, 7200002, 7291006, 7397008, 7461003,  
7794004, 8185002, 8635005, 8837000,  
9167000, 9340000, 9674006, 9760005,  
10278007, 10327003, 10586006, 10875004,  
10981006, 11061003, 11806006, 11941006,  
12939007, 12969000, 13313007, 13438001,  
13581000, 13601005, 13670005, 13746004,  
14070001, 14077003, 14144000, 14183003,  
14291003, 14495005, 14784000, 15193003,  
15277004, 15639000, 15945005, 15977008,  
16295005, 16506000, 16805009, 16966009,  
16990005, 17155009, 17226007, 17262008,  
17496003, 17782008, 17961008, 18003009,  
18085000, 18260003, 18478005, 18573003,  
18653004, 18689007, 18818009, 18941000,  
19300006, 19445006, 19527009, 19694002,  
19766004, 20010003, 20250007, 20385005,  
20876004, 20960007, 21586000, 21634003,  
21897009, 21900002, 22121000, 22230001,  
22407005, 22419002, 23148009, 23560001,  
23645006, 24121004, 24125008, 24315006,  
24781009, 25501002, 25766007, 25922000,  
26025008, 26203008, 26453000, 26472000,  
26516009, 26530004, 26665006, 26714005,  
27387000, 27544004, 27720003, 27956007,  
28357009, 28368009, 28475009, 28663008,  
28676002, 28857002, 28864000, 28884001,  
29212009, 29599000, 29733004, 29929003,  
30059008, 30310000, 30336007, 30491001

## Postpartum Depression Screening and Follow-Up (PDS-E) (cont.):

### Codes:

**Depression or  
Other Behavioral  
Health Condition  
(cont.)**

**SNOMED  
CT (cont.):**

30509009, 30520009, 30605009, 30687003,  
30935000, 31027006, 31177006, 31358003,  
31373002, 31446002, 31611000, 31648009,  
31658008, 31715000, 31781004, 32009006,  
32174002, 32358001, 32388005, 32552001,  
32721004, 32875003, 32880007, 33078009,  
33135002, 33323008, 33380008, 33449004,  
33693007, 33736005, 33871004, 34116005,  
34315001, 34938008, 35218008, 35252006,  
35253001, 35481005, 35489007, 35607004,  
35722002, 35827000, 35846004, 35919005,  
36170009, 36217008, 36474008, 36583000,  
36622002, 36923009, 37331004, 37739004,  
37746008, 37868008, 37872007, 37941009,  
38295006, 38328002, 38368003, 38451003,  
38547003, 38694004, 39003006, 39465007,  
39610001, 39807006, 39809009, 39951001,  
40379007, 40568001, 40571009, 40673001,  
40926005, 40987004, 41021005, 41083005,  
41526007, 41552001, 41832009, 41836007,  
42344001, 42594001, 42810003, 42868002,  
42925002, 43150009, 43497001, 43568002,  
43614003, 43769008, 44031002, 44124003,  
44376007, 44966003, 45479006, 45677003,  
45912004, 46206005, 46229002, 46244001,  
46721000, 46975003, 47372000, 47447001,  
47505003, 47664006, 47916000, 48500005,  
48589009, 48826008, 48937005, 49271002,  
49468007, 49481000, 49512000, 49564006,  
50026000, 50320000, 50705009, 50722006,  
50878001, 50933003, 50983008, 51133006,  
51443000, 51493001, 51637008, 51771007,  
52702003, 52824009, 52866005, 52910006,  
52954000, 53049002, 53050002, 53467004,  
53607008, 53936005, 53956006, 54319003,  
54417002, 54502004, 54587008, 54761006,  
55009008, 55341008, 55516002, 55668003,  
55967005, 56576003, 56627002, 56641006

## Postpartum Depression Screening and Follow-Up (PDS-E) (cont.):

### Codes:

**Depression or  
Other Behavioral  
Health Condition  
(cont.)**

**SNOMED  
CT (cont.):**

56882008, 57194009, 57588009, 57715001,  
58214004, 58329000, 58535001, 58647003,  
58703003, 59216005, 59617007, 59645001,  
59651006, 59923000, 60099002, 60123008,  
61104008, 61144001, 61157009, 61180001,  
61212007, 61403008, 61569007, 61831009,  
61901004, 62239001, 62351001, 63181006,  
63204009, 63249007, 63393005, 63412003,  
63649001, 63701002, 63778009, 63909006,  
63983005, 64060000, 64165008, 64731001,  
64905009, 65042007, 65064003, 66307007,  
66344007, 66347000, 66381006, 66590003,  
66631006, 66936004, 67002003, 67123006,  
67195008, 67711008, 68019004, 68569003,  
68618008, 68890003, 68963006, 68995007,  
69322001, 69361009, 69392006, 69479009,  
69482004, 70328006, 70546001, 70691001,  
70747007, 70814008, 70932007, 71103003,  
71294008, 71328000, 71336009, 71787009,  
71959007, 71961003, 71984005, 72366004,  
72861004, 73097000, 73462009, 73471000,  
73867007, 74010007, 74266001, 74686005,  
74732009, 74850006, 74934004, 75084000,  
75122001, 75360000, 75752004, 75837004,  
76105009, 76129002, 76236006, 76441001,  
76566000, 76812003, 76868007, 77355000,  
77475008, 77486005, 77675002, 77815007,  
77911002, 78004001, 78269000, 78358001,  
78640000, 78667006, 79204003, 79298009,  
79524000, 79584002, 79842004, 79866005,  
80711002, 80868005, 81319007, 81463002,  
82096005, 82218004, 82339009, 82415003,  
82494000, 82738004, 82998009, 83168008,  
83176005, 83225003, 83253003, 83367009,  
83458005, 83501007, 83631006, 83746006,  
83890006, 84466009, 84760002, 84788008,  
84984002, 85061001, 85080004, 85248005,  
85561006, 85821003, 85861002, 86058007

## Postpartum Depression Screening and Follow-Up (PDS-E) (cont.):

### Codes:

**Depression or  
Other Behavioral  
Health Condition  
(cont.)**

**SNOMED  
CT: (cont.)**

87132004, 87203005, 87414006, 87512008,  
87798009, 87842000, 87950005, 87991007,  
88740003, 88845000, 88939009, 88975006,  
89415002, 89451009, 89618007, 89948007,  
90755006, 90790003, 93461009, 95637005,  
106013002, 106014008, 106015009, 109805003,  
111475002, 111476001, 111477005, 111479008,  
111480006, 111482003, 111483008, 111484002,  
111485001, 111487009, 111490003, 111491004,  
126943008, 128293007, 129104009, 129604005,  
129606007, 162218007, 162313000, 162702000,  
162722001, 187921002, 191447007, 191455000,  
191457008, 191458003, 191459006, 191466007,  
191471000, 191475009, 191476005, 191478006,  
191480000, 191483003, 191484009, 191485005,  
191486006, 191492000, 191493005, 191494004,  
191495003, 191496002, 191499009, 191501001,  
191508007, 191526005, 191527001, 191531007,  
191542003, 191547009, 191548004, 191554003,  
191555002, 191559008, 191561004, 191562006,  
191563001, 191564007, 191565008, 191567000,  
191569002, 191570001, 191571002, 191572009,  
191574005, 191577003, 191583000, 191584006,  
191586008, 191588009, 191590005, 191592002,  
191593007, 191595000, 191597008, 191604000,  
191610000, 191611001, 191613003, 191616006,  
191618007, 191620005, 191621009, 191623007,  
191625000, 191627008, 191629006, 191630001,  
191634005, 191636007, 191638008, 91639000,  
191641004, 191643001, 191659001, 191667009,  
191668004, 191670008, 191672000, 191676002,  
191678001, 191680007, 191687005, 191689008,  
191690004, 191692007, 191693002, 191696005,  
191697001, 191714002, 191722009, 191724005,  
191725006, 191726007, 191736004, 191737008,  
191738003, 191753006, 191765005, 191766006,  
191772006, 191773001, 191774007, 191787001,  
191811004, 191812006, 191813001, 191966002

## Postpartum Depression Screening and Follow-Up (PDS-E) (cont.):

### Codes:

**Depression or  
Other Behavioral  
Health Condition  
(cont.)**

**SNOMED  
CT: (cont.)**

192014006, 192037000, 192038005, 192039002,  
192041001, 192042008, 192044009, 192046006,  
192049004, 192051000, 192052007, 192054008,  
192056005, 192057001, 192058006, 192061007,  
192063005, 192064004, 192065003, 192069009,  
192072002, 192073007, 192079006, 192080009,  
192082001, 192092009, 192097003, 192099000,  
192100008, 192108001, 192110004, 192119003,  
192127007, 192131001, 192132008, 192147004,  
192362008, 192527004, 192562009, 192611004,  
192616009, 192631000, 197480006, 199257008,  
199259006, 199260001, 199261002, 199262009,  
229623002, 229699006, 229700007, 229701006,  
229715008, 229729009, 229740001, 229744005,  
229745006, 230334008, 230455006, 231437006,  
231438001, 231442003, 231443008, 231444002,  
231445001, 231446000, 231449007, 231450007,  
231451006, 231452004, 231453009, 231454003,  
231455002, 231456001, 231467000, 231485007,  
231487004, 231489001, 231494001, 231496004,  
231500002, 231504006, 231516000, 231520001,  
231521002, 231522009, 231523004, 231524005,  
231525006, 231526007, 231527003, 231528008,  
231530005, 231536004, 231537008, 231538003,  
231539006, 231540008, 231541007, 231542000,  
231864002, 233690008, 237351003, 237352005,  
238961003, 238966008, 238967004, 238972008,  
238973003, 238974009, 238975005, 238976006,  
238977002, 238978007, 238979004, 247803002,  
247804008, 267320004, 268612007, 268617001,  
268619003, 268621008, 268622001, 268624000,  
268633003, 268634009, 268658008, 268661009,  
268662002, 268664001, 268666004, 268667008,  
268668003, 268669006, 268673009,  
268734000, 270901009, 270902002, 270905000,  
271428004, 271952001, 274948002, 274952002,  
274953007, 275473003, 275474009, 276296007,  
276297003, 278506006, 278508007, 278852008



**Postpartum Depression Screening and Follow-Up (PDS-E) (cont.):**

	Codes:
<p><b>Depression or Other Behavioral Health Condition (cont.)</b></p>	<p><b>SNOMED CT: (cont.)</b></p> <p>278853003, 279611005, 280032002, 280943007, 280949006, 280994000, 286933003, 300706003, 300979000, 301643003, 302507002, 307417003, 310495003, 310496002, 310497006, 311173003, 312098001, 312936002, 313182004, 313224008, 313915006, 317816007, 318784009, 319768000, 320751009, 357705009, 370143000, 371024007, 371026009, 371596008, 371599001, 371600003, 371604007, 371631005, 373618009, 386701004, 386810004, 386820009, 386821008, 38682200, 386823006, 386824000, 386825004, 398066007, 402732001, 402733006, 402735004, 403578003, 403579006, 403590001, 403593004, 403594005, 403595006, 404906000, 406506008, 408856003, 408857007, 416340002, 417143004, 417294004, 420774007, 425914008, 425919003, 426174008, 426881004, 427469003, 427975003, 428687006, 428703001, 429672007, 430744005, 430751001, 430852001, 430909002, 432091002, 439960005, 441704009, 441711008, 441716003, 441833000, 442057004, 442245003, 442314000, 442351006, 443919007, 446175003, 446180007, 450714000, 473452003, 473456000, 473457009, 609225004, 698689005, 698690001, 698692009, 698693004, 698696007, 698697003, 698699000, 698700004, 698701000, 698946008, 698947004, 698951002, 699241002, 702356009, 702450004, 702732007, 702815001, 708037001, 712823008, 712824002, 712850003, 712884004, 713491003, 713583005, 713862009, 714829008, 715737004, 715924009, 716096005, 716199000, 716578009, 718393002, 719592004, 719600006, 720451004, 720452006, 720453001, 720454007, 720455008, 722287002, 723332005, 723899008, 723900003, 723901004, 723903001, 723905008, 723913009, 724673008, 724674002, 724675001, 724693000, 724706006, 724718002, 724719005, 724730008, 724733005,</p>

**Postpartum Depression Screening and Follow-Up (PDS-E) (cont.):**

Depression or Other Behavioral Health Condition (cont.)	SNOMED CT: (cont.)	Codes:
		<p>724734004, 724735003, 724736002, 724737006, 724738001, 724739009, 724740006, 724741005, 724742003, 726772006, 733623005, 735549008, 735550008, 737225007, 762327001, 762332000, 762347009, 762509000, 762516004, 765176007, 766824003, 767631007, 767632000, 767633005, 767635003, 767636002, 770790004, 771448004, 771512003, 782501005, 783089006, 789061003, 789399002, 870260008, 870261007, 870262000, 870263005, 870264004, 870265003, 870266002, 870267006, 870268001, 870269009, 870270005, 870280009, 870282001, 870303005, 870304004, 870305003, 870306002, 870307006, 870308001, 1153575004, 251000119105, 261000119107, 271000119101, 281000119103, 7031000119100, 18491000119109, 21071000119101, 21831000119109, 22641000119109, 22981000119106, 23601000119102, 23741000119105, 31081000119101, 39951000119105, 60401000119104, 62211000119103, 62231000119108, 89381000119107, 89501000119108, 92501000119101, 94631000119100, 97571000119109, 104851000119103, 130121000119104, 133091000119105, 133121000119109, 153071000119108, 270291000119109, 288271000119103, 288421000119100, 288511000119108, 288751000119101, 288851000119106, 288861000119108, 368361000119108, 1740001000004102, 10811121000119102, 10811161000119107, 16238741000119105, 16264621000119109, 16264821000119108, 16264901000119109, 16265061000119105, 16265301000119106, 16265951000119109, 16266831000119100, 16266991000119108</p>

**Postpartum Depression Screening and Follow-Up (PDS-E) (cont.):**

<b>Codes:</b>	
<b>CPT:</b>	59400, 59409, 59410, 59510, 59514, 59515, 59610, 59612, 59614, 59618, 59620, 59622
<b>ICD-10-PCS:</b>	10D00Z0, 10D00Z1, 10D00Z2, 10D07Z3, 10D07Z4, 10D07Z5, 10D07Z6, 10D07Z7, 10D07Z8, 10E0XZZ
<b>Deliveries</b>	4504004, 5556001, 10745001, 11466000, 14119008, 15413009, 16819009, 17860005, 18625004, 19390001, 22633006, 25296001, 25828002, 26313002, 28542003, 28860009, 29613008, 30476003, 33807004, 38479009, 40219000, 40704000, 40792007, 41059002, 45718005, 48204000, 54973000, 57271003, 58705005, 61586001, 62508004, 65243006, 69422002, 71166009, 72492007, 75928003, 84195007, 85403009, 89053004, 89346004, 89849000, 90438006, 177141003, 177142005, 177143000, 177152009, 177157003, 177158008, 177161009, 177162002, 177164001, 177167008, 177168003, 177170007, 177173009, 177174003, 177175002, 177176001, 177179008, 177180006, 177181005, 177184002, 177185001, 236974004, 236975003, 236976002, 236977006, 236978001, 236980007, 236981006, 236982004, 236983009, 236984003, 236985002, 236986001, 236987005, 236988000, 236989008, 236990004, 237311001, 265639000, 274130007, 275168001, 275169009, 288042004, 288193006, 302382009, 302383004, 306727001, 359940006, 359943008, 384729004, 384730009, 398307005, 416055001, 417121007, 450483001, 450484007, 450798003, 699999008, 700000006, 709004006, 734275002, 734276001, 736018001, 736020003, 736026009, 736118004, 788180009
<b>SNOMED CT:</b>	

### Postpartum Depression Screening and Follow-Up (PDS-E) (cont.):

	Codes:	
Beck Depression Inventory Fast Screen total score	LOINC:	89208-3
Beck Depression Inventory II total score	LOINC:	89209-1
Center for Epidemiologic Studies Depression Scale-Revised total score	LOINC:	89205-9
Edinburgh Postnatal Depression Scale total score	LOINC:	71354-5
My Mood Monitor Total score	LOINC:	71777-7
Patient Health Questionnaire 2 item (PHQ-2) total score	LOINC:	55758-7
Patient Health Questionnaire 9 item (PHQ-9) total score	LOINC:	44261-6
Patient Health Questionnaire 9 item (PHQ-9) total score	LOINC:	89204-2
PROMIS 29 Depression score total score	LOINC:	71965-8
Clinically Useful Depression Outcome Scale (CUDOS) total score	LOINC:	90221-3
Duke Anxiety-Depression Scale (DADS) total score	LOINC:	90853-3
Screening for depression is documented as negative; a follow-up plan is not required	HCPCS:	G8510
Screening for depression is documented as being positive, and a follow-up plan is documented	HCPCS:	G8431
Screening for depression documented as positive, follow-up plan not documented, reason not given	HCPCS:	G8511

## Prenatal Depression Screening and Follow-Up (PND-E):

	Codes:
<b>37 Weeks Gestation</b>	<b>ICD-10-CM:</b> Z3A.37
	<b>SNOMED CT:</b> 43697006
<b>38 Weeks Gestation</b>	<b>ICD-10-CM:</b> Z3A.38
	<b>SNOMED CT:</b> 13798002
<b>39 Weeks Gestation</b>	<b>ICD-10-CM:</b> Z3A.39
	<b>SNOMED CT:</b> 80487005
<b>40 Weeks Gestation</b>	<b>ICD-10-CM:</b> Z3A.40
	<b>SNOMED CT:</b> 46230007
<b>41 Weeks Gestation</b>	<b>ICD-10-CM:</b> Z3A.41
	<b>SNOMED CT:</b> 63503002
<b>42 Weeks Gestation</b>	<b>ICD-10-CM:</b> Z3A.42
	<b>SNOMED CT:</b> 36428009
<b>43 Weeks Gestation</b>	<b>ICD-10-CM:</b> Z3A.49

## Prenatal Depression Screening and Follow-Up (PND-E) (cont.):

	Codes:
	Z3A.01, Z3A.08, Z3A.09, Z3A.10, Z3A.11, Z3A.12, Z3A.13, Z3A.14, Z3A.15, Z3A.16, Z3A.17, Z3A.18, Z3A.19, Z3A.20, Z3A.21, Z3A.22, Z3A.23, Z3A.24, Z3A.25, Z3A.26, Z3A.27, Z3A.28, Z3A.29, Z3A.30, Z3A.31, Z3A.32, Z3A.33, Z3A.34, Z3A.35, Z3A.36
<b>ICD-10-CM:</b>	
<b>Weeks of Gestation Less Than 37</b>	931004, 6678005, 15633004, 23464008, 25026004, 26690008, 37005007, 38039008, 41438001, 44398003, 46906003, 48688005, 50367001, 54318006, 57907009, 62333002, 63110000, 65035007, 65683006, 72544005, 72846000, 74952004, 79992004, 82118009, 86801005, 86883006, 87178007, 313178001, 313179009, 428058009, 428566005, 428567001, 428930004
<b>SNOMED CT:</b>	
<b>Length of Gestation at Birth (observable entity)</b>	<b>SNOMED CT:</b> 412726003
<b>Symptoms of Depression (finding)</b>	<b>SNOMED CT:</b> 394924000, 788976000
	<b>CPT:</b> 99366, 99492, 99493, 99494
	<b>HCPCS:</b> G0512, T1016, T1017, T2022, T2023
<b>Depression Case Manager Encounter</b>	182832007, 225333008, 385828006, 386230005, 409022004, 410216003, 410219005, 410328009, 410335001, 410346003, 410347007, 410351009, 410352002, 410353007, 410354001, 410356004, 410360001, 410363004, 410364005, 410366007, 416341003, 416584001, 424490002, 425604002, 737850002
	<b>SNOMED CT:</b>

## Prenatal Depression Screening and Follow-Up (PND-E) (cont.):

### Behavioral Health Encounter

#### CPT:

90791, 90792, 90832, 90833, 90834,  
90836, 90837, 90838, 90839, 90845,  
90846, 90847, 90849, 90853, 90865,  
90867, 90868, 90869, 90870, 90875,  
90876, 90880, 90887, 99484, 99492,  
99493

#### HCPCS:

G0155, G0176, G0177, G0409, G0410,  
G0411, G0511, G0512, H0002, H0004,  
H0031, H0034, H0035, H0036, H0037,  
H0039, H0040, H2000, H2001, H2010,  
H2011, H2012, H2013, H2014, H2015,  
H2016, H2017, H2018, H2019, H2020,  
S0201, S9480, S9484, S9485

#### SNOWMED:

5694008, 10197000, 10997001,  
38756009, 45392008, 79094001,  
88848003, 90407005, 91310009,  
165171009, 165190001, 225337009,  
370803007, 372067001, 385721005,  
385724002, 385725001, 385726000,  
385727009, 385887004, 385889001,  
385890005, 401277000, 410223002,  
410224008, 410225009, 410226005,  
410227001, 410228006, 410229003,  
410230008, 410231007, 410232000,  
410233005, 410234004, 439141002



## Prenatal Depression Screening and Follow-Up (PND-E) (cont.):

### Codes:

**Depression or  
Other Behavioral  
Health Condition**

### ICD-10-PCS:

F01.511, F01.518, F06.4, F10.180, F10.280, F10.980, F11.188, F11.288, F11.988, F12.180, F12.280, F12.980, F13.180, F13.280, F13.980, F14.180, F14.280, F14.980, F15.180, F15.280, F15.980, F16.180, F16.280, F16.980, F18.180, F18.280, F18.980, F19.180, F19.280, F19.980, F20.0, F20.1, F20.2, F20.3, F20.5, F20.81, F20.89, F20.9, F21, F22, F23, F24, F25.0, F25.1, F25.8, F25.9, F28, F29, F30.10, F30.11, F30.12, F30.13, F30.2, F30.3, F30.4, F30.8, F30.9, F31.0, F31.10, F31.11, F31.12, F31.13, F31.2, F31.30, F31.31, F31.32, F31.4, F31.5, F31.60, F31.61, F31.62, F31.63, F31.64, F31.70, F31.71, F31.72, F31.73, F31.74, F31.75, F31.76, F31.77, F31.78, F31.81, F31.89, F31.9, F32.0, F32.1, F32.2, F32.3, F32.4, F32.5, F32.8, F32.81, F32.89, F32.9, F32.A, F33.0, F33.1, F33.2, F33.3, F33.40, F33.41, F33.42, F33.8, F33.9, F34.0, F34.1, F34.8, F34.81, F34.89, F34.9, F39, F40.00, F40.01, F40.02, F40.10, F40.11, F40.210, F40.218, F40.220, F40.228, F40.230, F40.231, F40.232, F40.233, F40.240, F40.241, F40.242, F40.243, F40.248, F40.290, F40.291, F40.298, F40.8, F40.9, F41.0, F41.1, F41.3, F41.8, F41.9, F42, F42.2, F42.3, F42.4, F42.8, F42.9, F43.0, F43.10, F43.11, F43.12, F43.20, F43.21, F43.22, F43.23, F43.24, F43.25, F43.29, F43.8, F43.9, F44.89, F45.21, F51.5, F53, F53.0, F53.1, F60.0, F60.1, F60.2, F60.3, F60.4, F60.5, F60.6, F60.7, F60.81, F60.89, F60.9, F63.0, F63.1, F63.2, F63.3, F63.81, F63.89, F63.9, F68.10, F68.11, F68.12, F68.13, F68.8, F68.A, F84.0, F84.2, F84.3, F84.5, F84.8, F84.9, F90.0, F90.1, F90.2, F90.8, F90.9, F91.0, F91.1, F91.2, F91.3, F91.8, F91.9, F93.0, F93.8, F93.9, F94.0, F94.1, F94.2, F94.8, F94.9, O90.6, O99.340, O99.341, O99.342, O99.343, O99.344, O99.345

**Prenatal Depression Screening and Follow-Up (PND-E) (cont.):**

**Depression or  
Other Behavioral  
Health Condition  
(cont.)**

**Codes:**

**SNOMED  
CT:**

109006, 162004, 281004, 600009, 832007,  
899001,1145003, 1196001, 1376001, 1380006,  
1383008, 1499003, 1686006, 1816003, 1855002,  
1973000, 2312009, 2403008, 2506003, 2618002,  
2815001, 3109008, 3158007, 3503000, 3530005,  
3914008, 4306003, 4441000, 4926007, 4932002,  
4997005, 5095008, 5158005, 5444000,  
5464005, 5507002, 5509004, 5510009,  
5703000, 6348008, 7025000, 7052005,  
7200002, 7291006, 7397008, 7461003, 7794004,  
8185002, 8635005, 8837000, 9167000,  
9340000, 9674006, 9760005, 10278007,  
10327003, 10586006, 10875004, 10981006,  
11061003, 11806006, 11941006, 12939007,  
12969000, 13313007, 13438001, 13581000,  
13601005, 13670005, 13746004, 14070001,  
14077003, 14144000, 14183003, 14291003,  
14495005, 14784000, 15193003, 15277004,  
15639000, 15945005, 15977008, 16295005,  
16506000, 16805009, 16966009, 16990005,  
17155009, 17226007, 17262008, 17496003,  
17782008, 17961008, 18003009, 18085000,  
18260003, 18478005, 18573003, 18653004,  
18689007, 18818009, 18941000, 19300006,  
19445006, 19527009, 19694002, 19766004,  
20010003, 20250007, 20385005, 20876004,  
20960007, 21586000, 21634003, 21897009,  
21900002, 22121000, 22230001, 22407005,  
22419002, 23148009, 23560001, 23645006,  
24121004, 24125008, 24315006, 24781009,  
25501002, 25766007, 25922000, 26025008,  
26203008, 26453000, 26472000, 26516009,  
26530004, 26665006, 26714005, 27387000,  
27544004, 27720003, 27956007, 28357009,  
28368009, 28475009, 28663008, 28676002,  
28857002, 28864000, 28884001, 29212009,  
29599000, 29733004, 29929003, 30059008,  
30310000, 30336007, 30491001, 30509009

## Prenatal Depression Screening and Follow-Up (PND-E) (cont.):

Depression or Other Behavioral Health Condition (cont.)	Codes:
	SNOMED CT (cont.):
	30520009, 30605009, 30687003, 30935000, 31027006, 31177006, 31358003, 31373002, 31446002, 31611000, 31648009, 31658008, 31715000, 31781004, 32009006, 32174002, 32358001, 32388005, 32552001, 32721004, 32875003, 32880007, 33078009, 33135002, 33323008, 33380008, 33449004, 33693007, 33736005, 33871004, 34116005, 34315001, 34938008, 35218008, 35252006, 35253001, 35481005, 35489007, 35607004, 35722002, 35827000, 35846004, 35919005, 36170009, 36217008, 36474008, 36583000, 36622002, 36923009, 37331004, 37739004, 37746008, 37868008, 37872007, 37941009, 38295006, 38328002, 38368003, 38451003, 38547003, 38694004, 39003006, 39465007, 39610001, 39807006, 39809009, 39951001, 40379007, 40568001, 40571009, 40673001, 40926005, 40987004, 41021005, 41083005, 41526007, 41552001, 41832009, 41836007, 42344001, 42594001, 42810003, 42868002, 42925002, 43150009, 43497001, 43568002, 43614003, 43769008, 44031002, 44124003, 44376007, 44966003, 45479006, 45677003, 45912004, 46206005, 46229002, 46244001, 46721000, 46975003, 47372000, 47447001, 47505003, 47664006, 47916000, 48500005, 48589009, 48826008, 48937005, 49271002, 49468007, 49481000, 49512000, 49564006, 50026000, 50320000, 50705009, 50722006, 50878001, 50933003, 50983008, 51133006, 51443000, 51493001, 51637008, 51771007, 52702003, 52824009, 52866005, 52910006, 52954000, 53049002, 53050002, 53467004, 53607008, 53936005, 53956006, 54319003, 54417002, 54502004, 54587008, 54761006, 55009008, 55341008, 55516002, 55668003, 55967005, 56576003, 56627002, 56641006, 56882008

## Prenatal Depression Screening and Follow-Up (PND-E) (cont.):

**Depression or  
Other Behavioral  
Health Condition  
(cont.)**

**Codes:**

**SNOMED  
CT (cont.):**

57194009, 57588009, 57715001, 58214004,  
58329000, 58535001, 58647003, 58703003,  
59216005, 59617007, 59645001, 59651006,  
59923000, 60099002, 60123008, 61104008,  
61144001, 61157009, 61180001, 61212007,  
61403008, 61569007, 61831009, 61901004,  
62239001, 62351001, 63181006, 63204009,  
63249007, 63393005, 63412003, 63649001,  
63701002, 63778009, 63909006, 63983005,  
64060000, 64165008, 64731001, 64905009,  
65042007, 65064003, 66307007, 66344007,  
66347000, 66381006, 66590003, 66631006,  
66936004, 67002003, 67123006, 67195008,  
67711008, 68019004, 68569003, 68618008,  
68890003, 68963006, 68995007, 69322001,  
69361009, 69392006, 69479009, 69482004,  
70328006, 70546001, 70691001, 70747007,  
70814008, 70932007, 71103003, 71294008,  
71328000, 71336009, 71787009, 71959007,  
71961003, 71984005, 72366004, 72861004,  
73097000, 73462009, 73471000, 73867007,  
74010007, 74266001, 74686005, 74732009,  
74850006, 74934004, 75084000, 75122001,  
75360000, 75752004, 75837004, 76105009,  
76129002, 76236006, 76441001, 76566000,  
76812003, 76868007, 77355000, 77475008,  
77486005, 77675002, 77815007, 77911002,  
78004001, 78269000, 78358001, 78640000,  
78667006, 79204003, 79298009, 79524000,  
79584002, 79842004, 79866005, 80711002,  
80868005, 81319007, 81463002, 82096005,  
82218004, 82339009, 82415003, 82494000,  
82738004, 82998009, 83168008, 83176005,  
83225003, 83253003, 83367009, 83458005,  
83501007, 83631006, 83746006, 83890006,  
84466009, 84760002, 84788008, 84984002,  
85061001, 85080004, 85248005, 85561006,  
85821003, 85861002, 86058007, 87132004

## Prenatal Depression Screening and Follow-Up (PND-E) (cont.):

### Codes:

**Depression or  
Other Behavioral  
Health Condition  
(cont.)**

**SNOMED  
CT (cont.):**

87203005, 87414006, 87512008, 87798009,  
87842000, 87950005, 87991007, 88740003,  
88845000, 88939009, 88975006, 89415002,  
89451009, 89618007, 89948007, 90755006,  
90790003, 93461009, 95637005, 106013002,  
106014008, 106015009, 109805003, 111475002,  
111476001, 111477005, 111479008, 111480006,  
111482003, 111483008, 111484002, 111485001,  
111487009, 111490003, 111491004, 126943008,  
128293007, 129104009, 129604005, 129606007,  
162218007, 162313000, 162702000, 162722001,  
187921002, 191447007, 191455000, 191457008,  
191458003, 191459006, 191466007, 191471000,  
191475009, 191476005, 191478006, 191480000,  
191483003, 191484009, 191485005, 191486006,  
191492000, 191493005, 191494004, 191495003,  
191496002, 191499009, 191501001, 191508007,  
191526005, 191527001, 191531007, 191542003,  
191547009, 191548004, 191554003, 191555002,  
191559008, 191561004, 191562006, 191563001,  
191564007, 191565008, 191567000, 191569002,  
191570001, 191571002, 191572009, 191574005,  
191577003, 191583000, 191584006, 191586008,  
191588009, 191590005, 191592002, 191593007,  
191595000, 191597008, 191604000, 191610000,  
191611001, 191613003, 191616006, 191618007,  
191620005, 191621009, 191623007, 191625000,  
191627008, 191629006, 191630001, 191634005,  
191636007, 191638008, 91639000, 191641004,  
191643001, 191659001, 191667009, 191668004,  
191670008, 191672000, 191676002, 191678001,  
191680007, 191687005, 191689008, 191690004,  
191692007, 191693002, 191696005, 191697001,  
191714002, 191722009, 191724005, 191725006,  
191726007, 191736004, 191737008, 191738003,  
191753006, 191765005, 191766006, 191772006,  
191773001, 191774007, 191787001, 191811004,  
191812006, 191813001, 191966002, 192014006

**Prenatal Depression Screening and Follow-Up (PND-E) (cont.):**

	Codes:
<p><b>Depression or Other Behavioral Health Condition (cont.)</b></p>	<p><b>SNOMED CT (cont.):</b></p> <p>192037000, 192038005, 192039002, 192041001, 192042008, 192044009, 192046006, 192049004, 192051000, 192052007, 192054008, 192056005, 192057001, 192058006, 192061007, 192063005, 192064004, 192065003, 192069009, 192072002, 192073007, 192079006, 192080009, 192082001, 192092009, 192097003, 192099000, 192100008, 192108001, 192110004, 192119003, 192127007, 192131001, 192132008, 192147004, 192362008, 192527004, 192562009, 192611004, 192616009, 192631000, 197480006, 199257008, 199259006, 199260001, 199261002, 199262009, 229623002, 229699006, 229700007, 229701006, 229715008, 229729009, 229740001, 229744005, 229745006, 230334008, 230455006, 231437006, 231438001, 231442003, 231443008, 231444002, 231445001, 231446000, 231449007, 231450007, 231451006, 231452004, 231453009, 231454003, 231455002, 231456001, 231467000, 231485007, 231487004, 231489001, 231494001, 231496004, 231500002, 231504006, 231516000, 231520001, 231521002, 231522009, 231523004, 231524005, 231525006, 231526007, 231527003, 231528008, 231530005, 231536004, 231537008, 231538003, 231539006, 231540008, 231541007, 231542000, 231864002, 233690008, 237351003, 237352005, 238961003, 238966008, 238967004, 238972008, 238973003, 238974009, 238975005, 238976006, 238977002, 238978007, 238979004, 247803002, 247804008, 267320004, 268612007, 268617001, 268619003, 268621008, 268622001, 268624000, 268633003, 268634009, 268658008, 268661009, 268662002, 268664001, 268666004, 268667008, 268668003, 268669006, 268673009, 268734000, 270901009, 270902002, 270905000, 271428004, 271952001, 274948002, 274952002, 274953007, 275473003, 275474009, 276296007, 276297003, 278506006, 278508007, 278852008, 278853003, 286933003</p>

## Prenatal Depression Screening and Follow-Up (PND-E) (cont.):

### Codes:

**Depression or  
Other Behavioral  
Health Condition  
(cont.)**

**SNOWMED  
(cont.):**

300706003, 300979000, 301643003, 302507002,  
307417003, 310495003, 310496002, 310497006,  
311173003, 312098001, 312936002, 313182004,  
313224008, 313915006, 317816007, 318784009,  
319768000, 320751009, 357705009, 370143000,  
371024007, 371026009, 371596008, 371599001,  
371600003, 371604007, 371631005, 373618009,  
386701004, 386810004, 386820009, 386821008,  
38682200, 386823006, 386824000, 386825004,  
398066007, 402732001, 402733006, 402735004,  
403578003, 403579006, 403590001, 403593004,  
403594005, 403595006, 04906000, 406506008,  
408856003, 408857007, 416340002, 417143004,  
417294004, 420774007, 425914008, 425919003,  
426174008, 426881004, 427469003, 427975003,  
428687006, 428703001, 429672007, 430744005,  
430751001, 430852001, 430909002, 432091002,  
439960005, 441704009, 441711008, 441716003,  
441833000, 442057004, 442245003, 442314000,  
442351006, 443919007, 446175003, 446180007,  
450714000, 473452003, 473456000, 473457009,  
609225004, 698689005, 698690001, 698692009,  
698693004, 698696007, 698697003, 698699000,  
698700004, 698701000, 698946008, 698947004,  
698951002, 699241002, 702356009, 702450004,  
702732007, 702815001, 708037001, 712823008,  
712824002, 712850003, 712884004, 713491003,  
713583005, 713862009, 714829008, 715737004,  
715924009, 716096005, 716199000, 716578009,  
718393002, 719592004, 719600006, 720451004,  
720452006, 720453001, 720454007, 720455008,  
722287002, 723332005, 723899008, 723900003,  
723901004, 723903001, 723905008, 723913009,  
724673008, 724674002, 724675001, 724693000,  
724706006, 724718002, 724719005, 724730008,  
724733005, 724734004, 724735003, 724736002,  
724737006, 724738001, 724739009, 724740006,  
724741005, 724742003, 726772006, 733623005

**Prenatal Depression Screening and Follow-Up (PND-E) (cont.):**

**Codes:**

**Depression or  
Other Behavioral  
Health Condition  
(cont.)**

**SNOMED  
CT (cont.):**

735549008, 735550008, 737225007, 762327001,  
762332000, 762347009, 762509000, 762516004,  
765176007, 766824003, 767631007, 767632000,  
767633005, 767635003, 767636002, 770790004,  
771448004, 771512003, 782501005, 783089006,  
789061003, 789399002, 870260008, 870261007,  
870262000, 870263005, 870264004,  
870265003, 870266002, 870267006, 870268001,  
870269009, 870270005, 870280009,  
870282001, 870303005, 870304004, 870305003,  
870306002, 870307006, 870308001,  
1153575004, 251000119105, 261000119107,  
271000119101, 281000119103, 7031000119100,  
18491000119109, 21071000119101,  
21831000119109, 22641000119109,  
22981000119106, 23601000119102,  
23741000119105, 31081000119101,  
39951000119105, 60401000119104,  
62211000119103, 62231000119108,  
89381000119107, 89501000119108,  
92501000119101, 94631000119100,  
97571000119109, 104851000119103,  
130121000119104, 133091000119105,  
133121000119109, 153071000119108,  
270291000119109, 288271000119103,  
288421000119100, 288511000119108,  
288751000119101, 288851000119106,  
288861000119108, 368361000119108,  
1740001000004102, 10811121000119102,  
10811161000119107, 16238741000119105,  
16264621000119109, 16264821000119108,  
16264901000119109, 16265061000119105,  
16265301000119106, 16265951000119109,  
16266831000119100, 16266991000119108



## Prenatal Depression Screening and Follow-Up (PND-E) (cont.):

Codes:	
<b>CPT:</b>	59400, 59409, 59410, 59510, 59514, 59515, 59610, 59612, 59614, 59618, 59620, 59622
<b>ICD-10-PCS:</b>	10D00Z0, 10D00Z1, 10D00Z2, 10D07Z3, 10D07Z4, 10D07Z5, 10D07Z6, 10D07Z7, 10D07Z8, 10E0XZZ
<b>Deliveries</b>	4504004, 5556001, 10745001, 11466000, 14119008, 15413009, 16819009, 17860005, 18625004, 19390001, 22633006, 25296001, 25828002, 26313002, 28542003, 28860009, 29613008, 30476003, 33807004, 38479009, 40219000, 40704000, 40792007, 41059002, 45718005, 48204000, 54973000, 57271003, 58705005, 61586001, 62508004, 65243006, 69422002, 71166009, 72492007, 75928003, 84195007, 85403009, 89053004, 89346004, 89849000, 90438006, 177141003, 177142005, 177143000, 177152009, 177157003, 177158008, 177161009, 177162002, 177164001, 177167008, 177168003, 177170007, 177173009, 177174003, 177175002, 177176001, 177179008, 177180006, 177181005, 177184002, 177185001, 236974004, 236975003, 236976002, 236977006, 236978001, 236980007, 236981006, 236982004, 236983009, 236984003, 236985002, 236986001, 236987005, 236988000, 236989008, 236990004, 237311001, 265639000, 274130007, 275168001, 275169009, 288042004, 288193006, 302382009, 302383004, 306727001, 359940006, 359943008, 384729004, 384730009, 398307005, 416055001, 417121007, 450483001, 450484007, 450798003, 699999008, 700000006, 709004006, 734275002, 734276001, 736018001, 736020003, 736026009, 736118004, 788180009
<b>SNOMED CT:</b>	

## Prenatal Depression Screening and Follow-Up (PND-E) (cont.):

	Codes:	
Beck Depression Inventory Fast Screen total score	LOINC:	89208-3
Beck Depression Inventory II total score	LOINC:	89209-1
Center for Epidemiologic Studies Depression Scale-Revised total score	LOINC:	89205-9
Edinburgh Postnatal Depression Scale total score	LOINC:	71354-5
My Mood Monitor Total score	LOINC:	71777-7
Patient Health Questionnaire 2 item (PHQ-2) total score	LOINC:	55758-7
Patient Health Questionnaire 9 item (PHQ-9) total score	LOINC:	44261-6
Patient Health Questionnaire 9: Modified for teens total score	LOINC:	89204-2
PROMIS 29 Depression score total score	LOINC:	71965-8
Clinically Useful Depression Outcome Scale (CUDOS) total score	LOINC:	90221-3
Duke Anxiety-Depression Scale (DADS) total score	LOINC:	90853-3
Screening for depression is documented as negative; a follow-up plan is not required	HCPCS:	G8510
Screening for depression is documented as being positive, and a follow-up plan is documented	HCPCS:	G8431
Screening for depression documented as positive, follow-up plan not documented, reason not given	HCPCS:	G8511

## Prenatal Immunization Status (PRS-E)

	Codes:	
<b>Adult Influenza Immunization</b>	<b>CVX:</b>	88, 135, 140, 141, 144, 150, 153, 155, 158, 166, 168, 171, 185, 186, 197, 205
<b>Adult Influenza Vaccine Procedure</b>	<b>CPT:</b>	90630, 90653, 90654, 90656, 90658, 90661, 90662, 90673, 90674, 90682, 90686, 90688, 90689, 90694, 90756
	<b>SNOMED CT:</b>	46233009, 346524008, 346525009, 348046004, 348047008, 400564003, 400788004, 408752008, 418707004, 419562000, 430410002
<b>Tdap Immunization</b>	<b>CVX:</b>	115
<b>Tdap Vaccine Procedure</b>	<b>CPT:</b>	90715
	<b>SNOMED CT:</b>	428251000124104
<b>Length of gestation at birth (observable entity)</b>	<b>SNOMED CT:</b>	412726003

## Social Need Screening and Intervention (SNS-E):

### Codes:

#### CPT:

96156, 96160, 96161, 97802, 97803, 97804

#### HCPCS:

S5170, S9470

1759002, 61310001, 103699006, 308440001, 385767005, 710824005, 710925007, 711069006, 713109004, 1002223009, 1002224003, 1002225002, 1004109000, 1004110005, 1148446004, 441041000124100, 441201000124108, 441231000124100, 441241000124105, 441251000124107, 441261000124109, 441271000124102, 441281000124104, 441291000124101, 441301000124100, 441311000124102, 441321000124105, 441331000124108, 441341000124103, 441351000124101, 445291000124103, 445301000124102, 445641000124105, 462481000124102, 462491000124104, 464001000124109, 464011000124107, 464021000124104, 464031000124101, 464041000124106, 464051000124108, 464061000124105, 464071000124103, 464081000124100, 464091000124102, 464101000124108, 464111000124106, 464121000124103, 464131000124100, 464141000124105, 464151000124107, 464161000124109, 464171000124102, 464181000124104, 464191000124101, 464201000124103, 464211000124100, 464221000124108, 464231000124106, 464241000124101, 464251000124104, 464261000124102, 464271000124109, 464281000124107, 464291000124105, 464301000124106, 464311000124109, 464321000124101, 464331000124103, 464341000124108, 464351000124105, 464361000124107

### Food Insecurity Procedures

#### SNOMED CT:

**Codes:**

**Food Insecurity  
Procedures (cont.)**

**SNOMED CT  
(cont.):**

464371000124100, 464401000124102,  
464411000124104, 464421000124107,  
464431000124105, 464611000124102,  
464621000124105, 464631000124108,  
464641000124103, 464651000124101,  
464661000124104, 464671000124106,  
464681000124109, 464691000124107,  
464701000124107, 464721000124102,  
467591000124102, 467601000124105,  
467611000124108, 467621000124100,  
467631000124102, 467641000124107,  
467651000124109, 467661000124106,  
467671000124104, 467681000124101,  
467691000124103, 467711000124100,  
467721000124108, 467731000124106,  
467741000124101, 467751000124104,  
467761000124102, 467771000124109,  
467781000124107, 467791000124105,  
467801000124106, 467811000124109,  
467821000124101, 470231000124107,  
470591000124109, 470601000124101,  
470611000124103, 471111000124101,  
471121000124109, 471131000124107,  
472151000124109, 472331000124100

**CPT:**

96156, 96160, 96161

**Homelessness  
Procedures**

**SNOMED CT:**

308440001, 308440001, 710824005,  
711069006, 1148446004, 1148447008,  
1148812007, 1148814008, 1148817001,  
1148818006, 462481000124102,  
462491000124104, 464001000124109,  
464011000124107, 464021000124104,  
464131000124100, 464161000124109,  
464291000124105, 464301000124106,  
464311000124109, 464611000124102,  
470231000124107, 470471000124109,  
470481000124107, 470491000124105,  
470501000124102, 470581000124106,  
470591000124109, 470601000124101

## Codes:

Homelessness  
Procedures (cont.)

SNOMED CT  
(cont.):

470611000124103, 470781000124104,  
470791000124101, 470801000124100,  
470811000124102, 470821000124105,  
470831000124108, 470841000124103,  
471021000124108, 471031000124106,  
471041000124101, 471071000124109,  
471081000124107, 471091000124105,  
471101000124104, 471111000124101,  
471121000124109, 471131000124107,  
472031000124103, 472041000124108,  
472051000124105, 472081000124102,  
472091000124104, 472101000124105,  
472111000124108, 472121000124100,  
472131000124102, 472141000124107,  
472151000124109, 472161000124106,  
472191000124103, 472221000124105,  
472241000124103, 472261000124104,  
472301000124108, 472311000124106,  
472321000124103, 472331000124100,  
472341000124105, 472351000124107,  
472361000124109, 480791000124106,  
480801000124107, 480811000124105,  
480821000124102, 480831000124104,  
480871000124101, 480901000124101,  
480921000124106, 480931000124109,  
480941000124104, 480961000124100,  
480971000124107, 480981000124105,  
710824005, 711069006, 1148446004,  
1148447008, 1148812007, 1148814008,  
1148817001, 1148818006,  
462481000124102, 462491000124104,  
464001000124109, 464011000124107,  
464021000124104, 464131000124100,  
464161000124109, 464291000124105,  
464301000124106, 464311000124109,  
464611000124102, 470231000124107,  
470471000124109, 470481000124107,  
470491000124105, 470501000124102

## Codes:

**Homelessness  
Procedures (cont.)**

**SNOMED CT  
(cont.):**

470581000124106, 470591000124109,  
470601000124101, 470611000124103,  
470781000124104, 470791000124101,  
470801000124100, 470811000124102,  
470821000124105, 470831000124108,  
470841000124103, 471021000124108,  
471031000124106, 471041000124101,  
471071000124109, 471081000124107,  
71091000124105, 471101000124104,  
471111000124101, 471121000124109,  
471131000124107, 472031000124103,  
472041000124108, 472051000124105,  
472081000124102, 472091000124104,  
472101000124105, 472111000124108,  
472121000124100, 472131000124102,  
472141000124107, 472151000124109,  
472161000124106, 472191000124103,  
472221000124105, 472241000124103,  
472261000124104, 472301000124108,  
472311000124106, 472321000124103,  
472331000124100, 472341000124105,  
472351000124107, 472361000124109,  
480791000124106, 480801000124107,  
480811000124105, 480821000124102,  
480831000124104, 480871000124101,  
480901000124101, 480921000124106,  
480931000124109, 480941000124104,  
480961000124100, 480971000124107,  
480981000124105

## Housing Instability Procedures

### Codes:

**CPT:** 96156, 96160, 96161

### SNOMED CT:

308440001, 710824005, 711069006,  
1148446004, 1148447008, 1148812007,  
1148814008, 1148817001, 1148818006,  
462481000124102, 462491000124104,  
464001000124109, 464011000124107,  
464021000124104, 464131000124100,  
464161000124109, 464291000124105,  
464301000124106, 464311000124109,  
464611000124102, 470231000124107,  
470471000124109, 470481000124107,  
470591000124109, 470601000124101,  
470611000124103, 471041000124101,  
471051000124104, 471061000124102,  
471071000124109, 471111000124101,  
471121000124109, 471131000124107,  
472081000124102, 472091000124104,  
472131000124102, 472151000124109,  
472161000124106, 472191000124103,  
472221000124105, 472151000124109,  
472161000124106, 472191000124103,  
472221000124105, 472291000124107,  
472331000124100, 472381000124104,  
480841000124109, 480851000124106,  
480861000124108, 480901000124101



**Codes:**

**Inadequate Housing  
Procedures**

**CPT:**

96156, 96160, 96161

**SNOWMED CT:**

49919000, 308440001, 710824005,  
711069006, 1148446004, 1148813002,  
1148815009, 1148823006,  
462481000124102, 462491000124104,  
464001000124109, 464011000124107,  
464021000124104, 464131000124100,  
464161000124109, 464291000124105,  
464301000124106, 464311000124109,  
464611000124102, 470231000124107,  
470431000124106, 470441000124101,  
470451000124104, 470461000124102,  
470591000124109, 470601000124101,  
470611000124103, 471111000124101,  
471121000124109, 471131000124107,  
472151000124109, 472201000124100,  
472211000124102, 472231000124108,  
472251000124101, 472331000124100,  
472371000124102, 480881000124103,  
480891000124100, 480911000124103,  
480951000124102

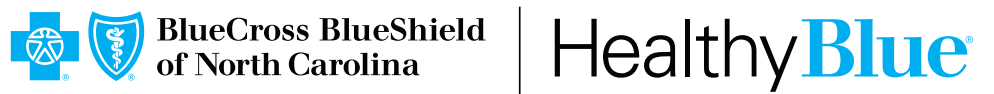
**Transportation  
Insecurity Procedures**

**CPT:**

96156, 96160, 96161

**SNOWMED CT:**

308440001, 710824005, 711069006,  
1148446004, 462481000124102,  
462491000124104, 464001000124109,  
464011000124107, 464021000124104,  
464131000124100, 464161000124109,  
464291000124105, 464301000124106,  
464311000124109, 464611000124102,  
470231000124107, 470591000124109,  
470601000124101, 470611000124103,  
471111000124101, 471121000124109,  
471131000124107, 472151000124109,  
472331000124100



<https://provider.healthybluenc.com>

Healthy Blue is a Medicaid plan offered by Blue Cross and Blue Shield of North Carolina. Blue Cross and Blue Shield of North Carolina is an independent licensee of the Blue Cross and Blue Shield Association. ® Marks of the Blue Cross and Blue Shield Association. All other marks are the property of their respective owners.